

Research

Open Access

## Vegetation fire smoke, indigenous status and cardio-respiratory hospital admissions in Darwin, Australia, 1996–2005: a time-series study

Ivan C Hanigan<sup>\*1</sup>, Fay H Johnston<sup>†1,2,3</sup> and Geoffrey G Morgan<sup>†4</sup>

Address: <sup>1</sup>School for Environmental Research, Charles Darwin University, Ellengowan Drive, Darwin, 0909, Northern Territory, Australia, <sup>2</sup>Menzies School of Health Research, Charles Darwin University, Ellengowan Drive, Darwin, 0909, Northern Territory, Australia, <sup>3</sup>Menzies Research Institute, University of Tasmania, Private Bag 23 Hobart 7001, Tasmania, Australia and <sup>4</sup>North Coast Area Health Service and Department of Rural Health (Northern Rivers) University of Sydney, 55–61 Uralba Street, Lismore, 2480, New South Wales, Australia

Email: Ivan C Hanigan<sup>\*</sup> - [ivan.hanigan@anu.edu.au](mailto:ivan.hanigan@anu.edu.au); Fay H Johnston - [fay.johnston@utas.edu.au](mailto:fay.johnston@utas.edu.au); Geoffrey G Morgan - [Geoff.Morgan@ncahs.health.nsw.gov.au](mailto:Geoff.Morgan@ncahs.health.nsw.gov.au)

<sup>\*</sup> Corresponding author    <sup>†</sup>Equal contributors

Published: 5 August 2008

Received: 24 January 2008

*Environmental Health* 2008, **7**:42    doi:10.1186/1476-069X-7-42

Accepted: 5 August 2008

This article is available from: <http://www.ehjournal.net/content/7/1/42>

© 2008 Hanigan et al; licensee BioMed Central Ltd.

This is an Open Access article distributed under the terms of the Creative Commons Attribution License (<http://creativecommons.org/licenses/by/2.0>), which permits unrestricted use, distribution, and reproduction in any medium, provided the original work is properly cited.

### Abstract

**Background:** Air pollution in Darwin, Northern Australia, is dominated by smoke from seasonal fires in the surrounding savanna that burn during the dry season from April to November. Our aim was to study the association between particulate matter less than or equal to 10 microns diameter (PM<sub>10</sub>) and daily emergency hospital admissions for cardio-respiratory diseases for each fire season from 1996 to 2005. We also investigated whether the relationship differed in indigenous Australians; a disadvantaged population sub-group.

**Methods:** Daily PM<sub>10</sub> exposure levels were estimated for the population of the city from visibility data using a previously validated model. We used over-dispersed Poisson generalized linear models with parametric smoothing functions for time and meteorology to examine the association between admissions and PM<sub>10</sub> up to three days prior. An interaction between indigenous status and PM<sub>10</sub> was included to examine differences in the impact on indigenous people.

**Results:** We found both positive and negative associations and our estimates had wide confidence intervals. There were generally positive associations between respiratory disease and PM<sub>10</sub> but not with cardiovascular disease. An increase of 10 µg/m<sup>3</sup> in same-day estimated ambient PM<sub>10</sub> was associated with a 4.81% (95%CI: -1.04%, 11.01%) increase in total respiratory admissions. When the interaction between indigenous status and PM<sub>10</sub> was assessed a statistically different association was found between PM<sub>10</sub> and admissions three days later for respiratory infections of indigenous people (15.02%; 95%CI: 3.73%, 27.54%) than for non-indigenous people (0.67%; 95%CI: -7.55%, 9.61%). There were generally negative estimates for cardiovascular conditions. For non-indigenous admissions the estimated association with total cardiovascular admissions for same day ambient PM<sub>10</sub> and admissions was -3.43% (95%CI: -9.00%, 2.49%) and the estimate for indigenous admissions was -3.78% (95%CI: -13.4%, 6.91%), although ambient PM<sub>10</sub> did have positive (non-significant) associations with cardiovascular admissions of indigenous people two and three days later.

**Conclusion:** We observed positive associations between vegetation fire smoke and daily hospital admissions for respiratory diseases that were stronger in indigenous people. While this study was limited by the use of estimated rather than measured exposure data, the results are consistent with the currently small evidence base concerning this source of air pollution.

## Background

Associations between daily hospital admissions for cardio-respiratory diseases and particulate matter less than or equal to 10 microns in aerodynamic diameter (PM<sub>10</sub>) have been described in many settings worldwide including North America, Europe, Asia and Australia [1]. In large cities, where the vast majority of research has been conducted, fossil fuel combustion in industry and transport are major sources of PM<sub>10</sub>. However, depending on the setting, there are potential contributions from a range of other sources including crustal particles and biomass combustion such as forest fires and wood fuels [2]. The relative effects of different sources of particulate pollution on adverse health outcomes, and differences in these effects across population sub-groups, remain major gaps in the currently available evidence [1]. In particular, the relative role of particulates derived from biomass as opposed to fossil fuel combustion remains unclear, although two empirical studies of PM<sub>10</sub> derived from vegetation fires [3,4], and one review of studies examining PM<sub>10</sub> from wood smoke [5] all observed that the magnitude of associations with respiratory outcomes is greater when PM was derived from biomass combustion. However, studies examining a single source of ambient PM<sub>10</sub> are infrequent because of the difficulty finding a site without a mixture of various pollutants, and the complexity of apportioning contributions from different sources [2,6]. A few epidemiological studies have apportioned total PM according to a range of sources (such as biomass, crustal and motor vehicles) and have found a range of different clinical outcomes were associated with different exposure sources [7,8].

The city of Darwin enables the health effects of vegetation fire smoke to be assessed because the source of the PM pollution is due almost entirely to fire smoke. Particulate matter derived from biomass combustion has been identified as an increasing and unregulated source of outdoor air pollution. The use of wood burning for domestic heating is increasing in several countries [9,10], while the frequency and severity of uncontrolled vegetation fires is increasing the world over [11]. Vegetation fires generate pollution episodes across wide geographic areas, and major population centers are frequently affected [12].

In Australia, the increasing use of deliberate fuel reduction burns as hazard reduction activities to avert major fire disasters is becoming more controversial in the light of the evidence of adverse health impacts of particulate air pollution [13].

The tropical city of Darwin (Latitude: -12.462, Longitude: 130.842) provides an opportunity to specifically examine the health associations of vegetation fire smoke. Here 50–70% of the surrounding savanna burns annually during

the 8 month dry season between April and November [14]. The months from December until March are referred to as the wet season when approximately 80% of Darwin's average annual total rain falls. Due to the rain, fires only occur during the dry season and the smoke from these fires are the source of 95% of measured PM<sub>10</sub> in the city [15]. There are no other important sources of air pollution such as traffic or industry and so PM is negligible during the wet season [16]. A comprehensive air quality study was conducted in the year 2000 [15] and the average concentrations of other pollutants including ozone, sulfur dioxide and nitrogen dioxide are negligible.

During the dry season, prevailing south-easterly winds bring vegetation fire smoke over Darwin from a large region of savanna. The lower atmosphere of the airshed is characteristically stable during dry seasons and there is a persistent inversion at about 3000 meters [17]. These conditions produce similar concentrations of ambient PM<sub>10</sub> across the city. This was validated in 2005 when PM<sub>10</sub> measurements at two monitors located 25 km to the west and south were shown to be of similar magnitude and highly correlated with the primary monitor [17]. This evidence shows the monitor values for PM<sub>10</sub> are representative of the community's exposure.

The pattern of vegetation burning remained consistent throughout the study period. This was demonstrated by analysis of satellite data which have confirmed the ongoing regional and seasonal nature of annual landscape fires [18] and by an air quality monitoring campaign conducted 25 km north-west of Darwin in the mid 1990s [16].

Darwin has a population of approximately 110,000 people and also provides an opportunity to examine the relative impact on indigenous Australians, a high-risk population subgroup comprising 11% of the population of Darwin [19]. Socio-economic disadvantage, chronic cardio-respiratory diseases and diabetes have all been shown to modify the effect of particulate air pollution on health outcomes [20]. Indigenous Australians have a high prevalence of all these health risks and have been recognized as being likely to be at much greater risk from poor air quality than other Australians [21]. This has been stated as a priority for Australian public health research [22].

A previous case-crossover study of the hospital admissions and observed PM<sub>10</sub> in Darwin showed a positive association with respiratory diseases, and disproportionately higher effect estimates in indigenous people [23]. That study had limited statistical power as Darwin's population is relatively small and only three years of air quality data were available for analysis. Here we attempt to address

these limitations by using PM<sub>10</sub> estimations over a 10-season period using a previously validated predictive model based on visibility records [17] and using the alternative method of time series modeling [24].

## Methods

### Study period

We examined data for the fire seasons between the 1<sup>st</sup> of April and 30<sup>th</sup> of November each year from 1996 to 2005. This period corresponds with the tropical dry seasons, which is characterised by constant savanna fires and regional smoke of fluctuating intensity as described above. Wet seasons were excluded because 80% of Darwin's average annual rainfall (1700 mm) falls during this period, landscape fires are absent and airborne PM is consequently negligible [15,16].

### Outcome measures

De-identified individual records of all persons admitted to the Royal Darwin Hospital for respiratory or cardiovascular conditions were provided by the Northern Territory Department of Health and Community Services. Elective admissions were excluded from the analysis. This is the only hospital in Darwin and services the entire population of the city and surrounding areas.

Principal diagnosis, indigenous status and primary residence were recorded on discharge from the hospital. Patients whose primary residence was not in Darwin were excluded.

Data were extracted by their assigned principal diagnosis codes classified according to the International Classification of Diseases (ICD) codes. In 1999 there was a change in the coding system used to assign diagnoses from the ICD edition 9 to edition 10. A concordance list produced by the New Zealand Health Information Service was used to marry the diagnosis codes across these two classification systems.

Time series of daily admissions were constructed for each 8-month fire season between 1996 and 2005 for the following diagnosis groups: Total Cardiovascular (ICD9 = 390–459, ICD10 = I00–I99), Ischemic Heart Disease – IHD (ICD9 = 410–414, ICD10 = I20–I25), Total Respiratory (ICD9 = 460–519, ICD10 = J00–J99), Asthma (ICD9 = 493, ICD10 = J45–J46), Chronic Obstructive Pulmonary Disease – COPD (ICD9 = 490–492, 494–496, ICD10 = J40–J44, J47, J67) and Respiratory Infections (ICD9 = 461–466, 480–487, 514, ICD10 = J00–J22).

Ethical approval was gained from the Human Research Ethics Committees of the Northern Territory Government Department of Health and Community Services, the Men-

zies School of Health Research and the Charles Darwin University.

### Exposure measures

We used a predictive model for deriving exposure measures for ambient PM<sub>10</sub> from visibility data because of the limited availability of empirical air quality data. Vegetation fire smoke is the main determinant of visibility during the dry seasons as rain and fog are rare events and there are no other important sources of air pollution. PM<sub>10</sub> was measured in Darwin during the years 2000, 2004 and 2005 and at Charles Point, 25 km west of central Darwin, during 1995. Data for the years 2000 and 2004 were used to develop the model, while data from 2005 and 1995 were used to assess the performance of the model. In addition, predicted peaks in PM<sub>10</sub> during 2000 and 2001 were mapped against bushfire activity records for this period. The development and validation of this model were described in detail by Bowman *et al* [17] and below we summarise how this was done. Insufficient measurements were available for PM<sub>2.5</sub> to develop a predictive model for this size class of PM.

### Data used for the development of the model

In 2000 the PM<sub>10</sub> was measured using a Tapered Element Oscillating Microbalance (Rupprecht and Patashnick series 1400a, East Greenbush, NY, USA), which provided continuous PM<sub>10</sub> loadings (µg/m<sup>3</sup>) with a 30-minute time resolution. This was centrally located at the Commonwealth Scientific and Industrial Research Organization research site at Darwin airport. Observations for 2004 and 2005 were obtained using a sequential air sampler (Rupprecht and Patashnick Partisol plus, model 2025, East Greenbush, NY, USA), which provided 24-hour gravimetric measures of PM<sub>10</sub> (µg/m<sup>3</sup>). This monitor was located at the Charles Darwin University, 7 km from the Darwin airport. Previous studies have demonstrated a high correlation and similar magnitude of daily PM<sub>10</sub> measured at these sites within Darwin [15].

In 1995 a monitor was located at Charles Point, 25 km west of central Darwin. PM<sub>10</sub> was measured gravimetrically using stacked filter units with an inlet that sampled particles less than or equal to 10 µm in diameter. These units sampled continuously for a period of 3 to 5 days, giving a 3- to 5-day average particulate concentration for each day within that sampling time [16]. During 2005, Bowman *et al* [17] assessed how PM measured at this site, compared with PM measured in the city by placing parallel monitors at the two locations. Daily PM<sub>10</sub> over a two month period were highly correlated ( $r^2 = 0.75$ ), although the overall mean PM<sub>10</sub> was lower at Charles Point than in Darwin (20.89 vs 23.85 µg/m<sup>3</sup>). We judged this correlation to be sufficiently high to justify the use of the 1995

data from Charles Point as a secondary independent validation of the predicted PM for Darwin.

Daily visibility and meteorological data were collected by the Australian Bureau of Meteorology at the Darwin Airport, located in the centre of the city. These data included precipitation in mm in the preceding 24 h before 0900 hours (local time); average total cloud amount in eighths; maximum air temperature degrees Celsius; averaged relative humidity percentage (from observation made at 0900, 1200 and 1500 hours); and average wind speed in km/h (from observations made at 0900, 1200 and 1500 hours). Average visibility in meters was derived from observations made at 0000, 0300, 0600, 0900, 1200, 1500, 1800 and 2100 hours. Visibility measurements have been made at this location since the 1950s, following the international standard practice of determining whether or not reference objects at known distances from the site were visible to the human observer.

**Development of the model**

The model was constructed using a training dataset of visibility, meteorological observations and daily PM<sub>10</sub> for the dry season months of 2000 and 2004. Predictive models of daily PM<sub>10</sub> were developed using Gaussian linear mixed modelling. To overcome the possibility of systematic changes associated with the progression of the dry season, 'month' was included as a random effect. A range of candidate models were assessed and final model was selected using the Akaike Information Criterion (AIC). The final model was as follows:

$$PM_{10} = (73.86 - \text{monthly correction}) + (-1.511 \times \text{visibility}) + (-0.113 \times \text{rainfall}) + (-0.262 \times \text{relative humidity})$$

**Assessment of the model**

Daily predicted estimates were validated against observations from a 91 day period (April – June) in 2005 which had been withheld from the training dataset used in model development. The measured observations for that period are shown superimposed on the predicted values in Figure 1, section A. The relationship between the predicted and measured ambient PM<sub>10</sub> from 2005 is shown in Figure 2 section B. The predicted ambient PM<sub>10</sub> correlated well with the observations with an r<sup>2</sup> of 0.68 and a slope of 0.90. The mean deviation between the predicted and measured values was -2 µg/m<sup>3</sup> with a standard deviation of 3.6. No adjustment was made for this small bias. Summary statistics for the estimated and true values in the validation dataset are shown in Table 1.

The model was further tested in two ways. It was used to generate monthly averaged predictive values to compare with PM10 collected at Charles Point (a location to the north-west) during the 1995 dry season. These data were

**Table 1: Summary statistics for measured and predicted PM10 (µg/m3) from April – June 2005.**

	Mean	Median	Minimum	Maximum
Measured	15.31	13.67	6.93	31.12
Predicted	17.42	16.40	6.45	35.07

highly correlated (r<sup>2</sup> = 0.89). As expected from previous comparisons, the mean PM10 at Charles Point were slightly lower than that predicted for Darwin (17.6 vs 18.7 µg/m<sup>3</sup>). Finally, peaks in the predicted PM10 were mapped against both satellite records and written documentation of the date and location of significant fire activity held by the Bureau of Meteorology for the dry seasons of 2000 and 2001. Predicted peaks in PM10 were found to correlate well with both these records [17].

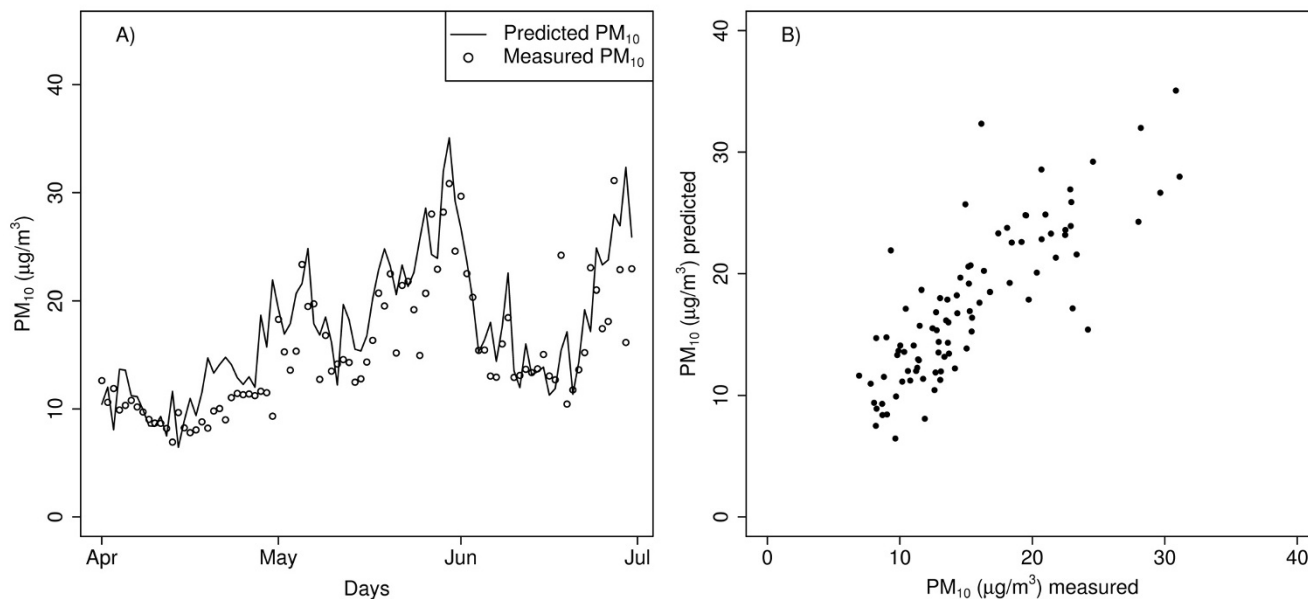
The estimated ambient PM<sub>10</sub> levels from this predictive model for our study period are shown in Figure 2.

**Measurement of covariates for hospital data analysis**

Mean daily relative humidity (percentage) and temperature (Celsius) measured at Darwin airport were provided by the Bureau of Meteorology. Three days of missing temperatures were imputed with the prior and subsequent days. Weekly influenza data (as a rate per 1000 consultations) were provided by the tropical influenza surveillance system network of sentinel General Practitioners (Northern Territory Department of Health and Community Services, Darwin). An epidemic was defined as periods during which influenza rates were greater than the 90<sup>th</sup> percentile.

**Statistical modeling**

Statistical approaches for analyzing time series data in air pollution studies continue to be refined [25-28]. Here we have followed the methods of the American Medicare Air Pollution Study [28] and the National Morbidity, Mortality and Air Pollution Study [29] by using over-dispersed Poisson generalized linear models with natural cubic splines for smoothed functions of time and meteorological variables. These authors suggested other studies reproduce their analyses using the same methods to increase the comparability of results of air pollution studies and have made their computer code available on the web for adaptation. We adapted Peng's code [30] to suit our data as follows: we included variables for relevant local factors including indigenous status, influenza epidemics, holidays, and the change between ICD editions but did not stratify by age because of the extremely low numbers of daily admissions this would create for some diagnosis groups.



**Figure 1**  
**Model predictions of ambient PM<sub>10</sub> against the measured data in 2005.** Comparison of model daily predictions of ambient PM<sub>10</sub> (µg/m<sup>3</sup>) using visibility with measured data withheld from modeling for use as validation dataset: A) superimposed to show day-to-day variation and B) as a scatter plot to show correlation (r<sup>2</sup> of 0.68, slope = 0.90). Observed PM<sub>10</sub> is included for comparison purposes only, the study used predicted PM<sub>10</sub> values only.

Our regression models separately analyzed the association of same day estimated ambient PM<sub>10</sub> and lags up to three days with daily admission counts for each diagnostic group. Potential confounding or modifying explanatory variables were included in all analyses using previously established protocols for air pollution health studies [31]. We included additional parameters to control for time varying factors including influenza epidemics and school holidays. Annual estimates of the populations of indigenous and non-indigenous Darwin residents were included as an offset in the model as the total population of Darwin grew by 10% during the study period.

We used an over-dispersed Poisson model of daily hospital admissions as follows:

$$\log [E(Y_t)] = \beta_1 \text{ Lagged PM}_{10} + \beta_2 \text{ Indigenous} + \text{ns}(\text{Time}) + \text{ns}(\text{AvDailyTemp}) + \text{ns}(\text{AvDailyTemp}_{\text{Lag1-3}}) + \text{ns}(\text{RHumAv}) + \text{ns}(\text{RHumAv}_{\text{Lag1-3}}) + \text{DOW} + \text{FluEpidemic} + \text{ICD10change} + \text{Holidays} + \text{offset}(\log(\text{Population}))$$

Where E(Y<sub>t</sub>) is the expected admission count on day t and 'ns' represents natural cubic splines. These variables, and the degrees of freedom (df) used in splines that represent them, are explained in Table 2.

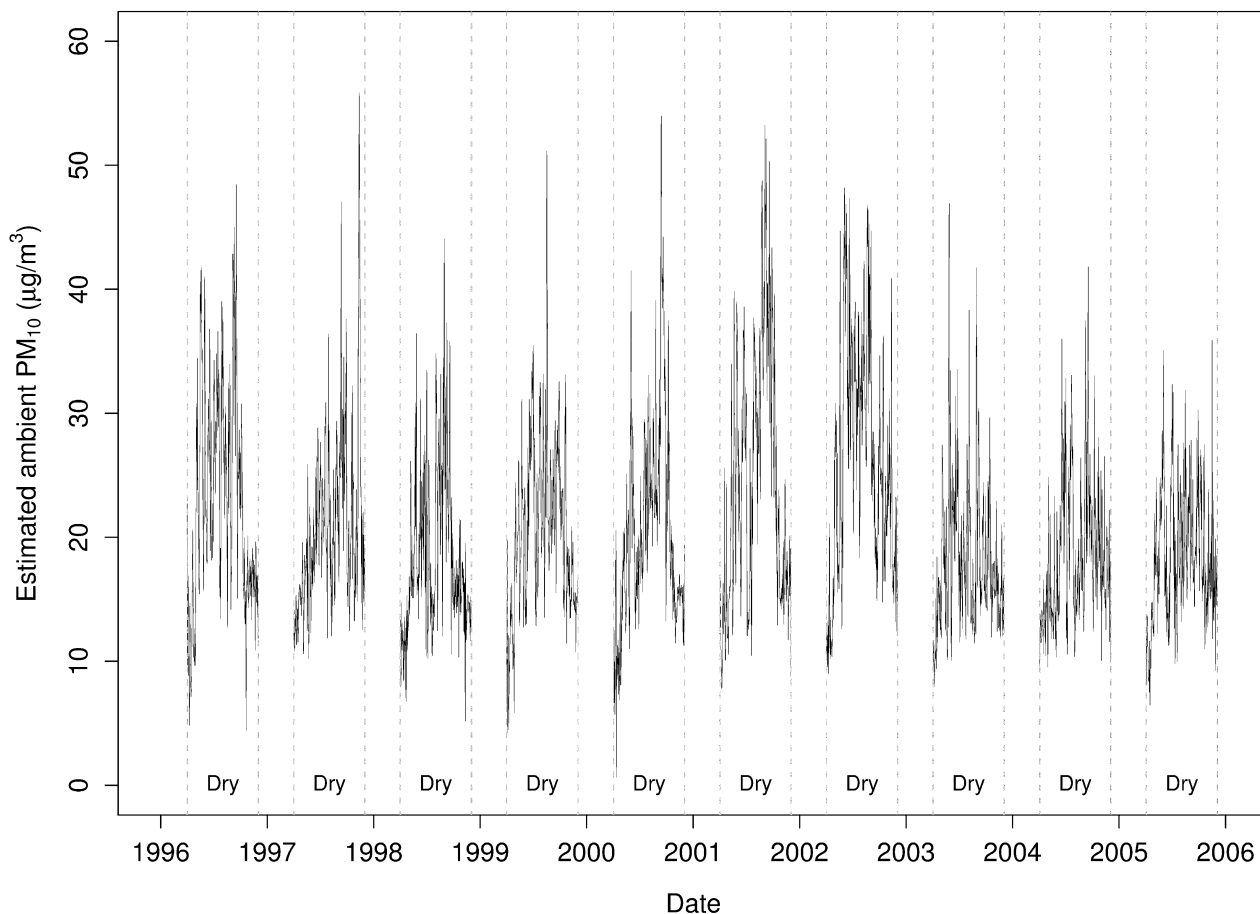
Because school holidays are likely to be related to rates of hospital admissions in children [31] these were included as a dummy variable for total respiratory admissions, asthma and respiratory infections as these conditions had a high proportion of children aged less than 15 years.

Finally, an interaction term between indigenous status and estimated ambient PM<sub>10</sub> was added to the model to investigate the difference in the magnitude of the association in the two population sub-groups.

All analyses were conducted using the statistical software package R version 2.3.1 [32].

**Results**

There were 2,410 days in the 10 dry seasons of our study period. There were 8,279 admissions during this period. The total numbers of hospital admissions (and proportion of patients under 15 years old) are given in Table 3, stratified by clinical grouping and indigenous status. Despite indigenous people representing 11% of the population of Darwin, they comprised 23% of these admissions.



**Figure 2**  
**Daily estimated ambient PM<sub>10</sub> for Darwin during each 8-month dry season, 1996–2005.** Ambient PM<sub>10</sub> (µg/m<sup>3</sup>) was estimated from visibility and weather data. No estimates were made for the 4-month wet seasons.

Descriptive statistics for daily admissions in each disease category, estimated daily ambient PM<sub>10</sub> and meteorological parameters are summarized in Table 4.

Our modeling procedure used a sensitivity analysis similar to the method described by Dominici and colleagues [26] to select the optimal degrees of freedom for the smoothed function of time; to minimize bias in the estimates of the pollution coefficients. This sensitivity analysis was applied to the model for the estimated ambient PM<sub>10</sub> lag with the greatest absolute t-value. We adjusted the degree of smoothing on the time variable by applying different values of a multiplier ( $\alpha$ ) that ranged from 0.2 to 3 times the degrees of freedom which had been chosen a priori [28,30]. The influence that this had on the effect

estimate was assessed using the change in the mean squared error. Theoretically there is lower bias in the estimate caused by smoothing at higher values of  $\alpha$ , but there is larger statistical uncertainty. We conservatively selected the optimal smoothing function for minimizing bias in the point estimate.

The point estimates and 95% Confidence Intervals (CI) for the association between hospital admissions with estimated ambient PM<sub>10</sub> are reported here as the percentage change in the relative risk per 10 µg/m<sup>3</sup> change in exposure.

Initial modeling without the interaction between indigenous status and PM<sub>10</sub> found a positive association for total

**Table 2: explanatory variables used in all models.**

Variable	Description
Lagged PM <sub>10</sub>	Estimated ambient PM <sub>10</sub> for each single-day lag 0, 1, 2 or 3 in (µg/m <sup>3</sup> )
Indigenous	An index of counts for indigenous status where indigenous = 1 and non-indigenous = 0
Time	Time in days, represented by a natural cubic spline with 40 df (4 df per dry season)
AvDailyTemp	Average daily temperature (calculated by averaging the max and min temperatures), in Degrees Celsius (°C), with 6df
AvDailyTemp <sub>Lag1-3</sub>	Moving three-day averages of daily temperatures (lags 1, 2 and 3), with 6df
RHumAv	Average daily relative humidity in percent (%) with 3df
RHumAv <sub>Lag1-3</sub>	Moving three-day averages of daily relative humidity (lags 1, 2 and 3), with 3 df
DOW	Day of the week. Factor with 7 levels
FluEpidemic	Influenza epidemics. Dummy for days above the 90th centile
ICD10change	The change between ICD editions. Dummy variable indicating the changeover
Holidays	Dummy variable for public holidays
Population	The estimated yearly population for indigenous or non-indigenous residents included as an offset

respiratory admissions with same day estimated ambient PM<sub>10</sub> (4.81%; 95%CI: -1.04%, 11.01%). The subgroups of respiratory infections, asthma and COPD all had positive associations with same day estimated ambient PM<sub>10</sub>. The small associations for all cardiovascular diseases and IHD were all negative or zero and not statistically significant. Due to small numbers in these groups the confidence intervals are wide.

We then compared the effects for indigenous and non-indigenous people. Figure 3 shows the point estimates and 95% confidence intervals for the association between hospital admissions with estimated ambient PM<sub>10</sub> when an interaction term with indigenous status is included. A statistically different association (p-value = 0.01) was observed for respiratory infections in indigenous people of 15.02% (95%CI: 3.73%, 27.54%) at a lag of 3 days while no association was evident for this condition in

non-indigenous people at this lag (0.67%; 95%CI: -7.55%, 9.61%).

The point estimates for the effects in the other disease groups were not significantly different at the 95% confidence level; however the indigenous estimates were consistently higher than those for the non-indigenous population. The association of total respiratory admissions with same-day ambient PM<sub>10</sub> in indigenous residents was much higher (9.40%; 95%CI: 1.04%, 18.46%) compared with the estimate for non-indigenous residents (3.14%; 95%CI: -2.99%, 9.66%). For asthma admissions and estimated ambient PM<sub>10</sub> there was a non-significant estimated increase at a lag of 1 day: 16.27% (95%CI: -3.55%, 40.17%) for indigenous compared with 8.54% (95%CI: -5.60%, 24.80%) for non-indigenous people.

**Table 3: Emergency hospitalizations to the Royal Darwin Hospital for the dry seasons 1996–2005.**

Diagnosis	Population in each group		Total population		Non-Indigenous admissions		Indigenous admissions		Percent < 15 yrs (total population)
	ICD9	ICD10	Counts	Percentage	Counts	Percentage	Counts	Percentage	
			109,478		97,887		11,591		
Cardiovascular									
Total	390–459	I00-I99	3443	100%	2854	100%	589	100%	1%
IHD	410–414	I20-I25	1533	45%	1287	45%	246	42%	0%
Other	-	-	1910	55%	1567	55%	343	58%	2%
Respiratory									
Total	460–519	J00-J99	4836	100%	3551	100%	1285	100%	40%
Asthma	493	J45-J46	1008	21%	776	22%	232	18%	58%
COPD	490–492, 494–496	J40-J44, J47, J67	995	21%	753	21%	242	19%	1%
Infections	461–466, 480–487, 514	J00-J22	2409	50%	1681	47%	728	57%	53%
Other	-	-	424	9%	341	10%	83	6%	16%

**Table 4: Statistics for hospitalizations, estimated PM<sub>10</sub> and weather in Darwin for dry seasons 1996–2005.**

Diagnosis		Mean	Standard Deviation	Range
Cardiovascular	Total	1.4	1.2	6.0
	Indigenous	0.2	0.5	4.0
	Non-Indigenous	1.2	1.1	6.0
IHD	Total	0.6	0.8	5.0
	Indigenous	0.1	0.3	2.0
	Non-Indigenous	0.5	0.7	5.0
Respiratory	Total	2.0	1.5	10.0
	Indigenous	0.5	0.7	4.0
	Non-Indigenous	1.5	1.2	7.0
Asthma	Total	0.4	0.7	5.0
	Indigenous	0.1	0.3	2.0
	Non-Indigenous	0.3	0.6	3.0
COPD	Total	0.4	0.7	4.0
	Indigenous	0.1	0.3	2.0
	Non-Indigenous	0.3	0.6	4.0
Respiratory infections	Total	1.0	1.1	7.0
	Indigenous	0.3	0.5	3.0
	Non-Indigenous	0.7	0.9	5.0
Daily Estimated Ambient PM <sub>10</sub> (µg/m <sup>3</sup> )		21.2	8.2	55.2
Daily Average Temperature (°C)		27.4	2.2	13.1
Daily Average Relative Humidity (%)		65.0	11.1	70.4
Influenza rates (weekly cases per 1000 consults for each day of the week)		13.2	12.3	82.4

There were positive non-significant estimates for same day estimated ambient PM<sub>10</sub> with COPD admissions in both groups. This is in contrast to negative associations with COPD admissions and lagged estimated ambient PM<sub>10</sub> in both groups.

There were no clear associations with estimated ambient PM<sub>10</sub> and total cardiovascular admissions or IHD. For non-indigenous admissions the estimated association with total cardiovascular admissions for ambient PM<sub>10</sub> at lag 0 was -3.43% (95%CI: -9.00%, 2.49%) and the estimate for indigenous admissions was -3.78% (95%CI: -13.4%, 6.91%), although indigenous people did have positive (non-significant) estimates at lags 2 and 3.

**Discussion**

We found generally positive associations between PM<sub>10</sub> with total respiratory admissions, asthma and respiratory infections especially among indigenous people for total respiratory admissions (at lag 0) and respiratory infections (at lag 3). Negative associations were apparent between lagged PM<sub>10</sub> and COPD. There were generally negative non-significant associations for cardiovascular outcomes in both population groups.

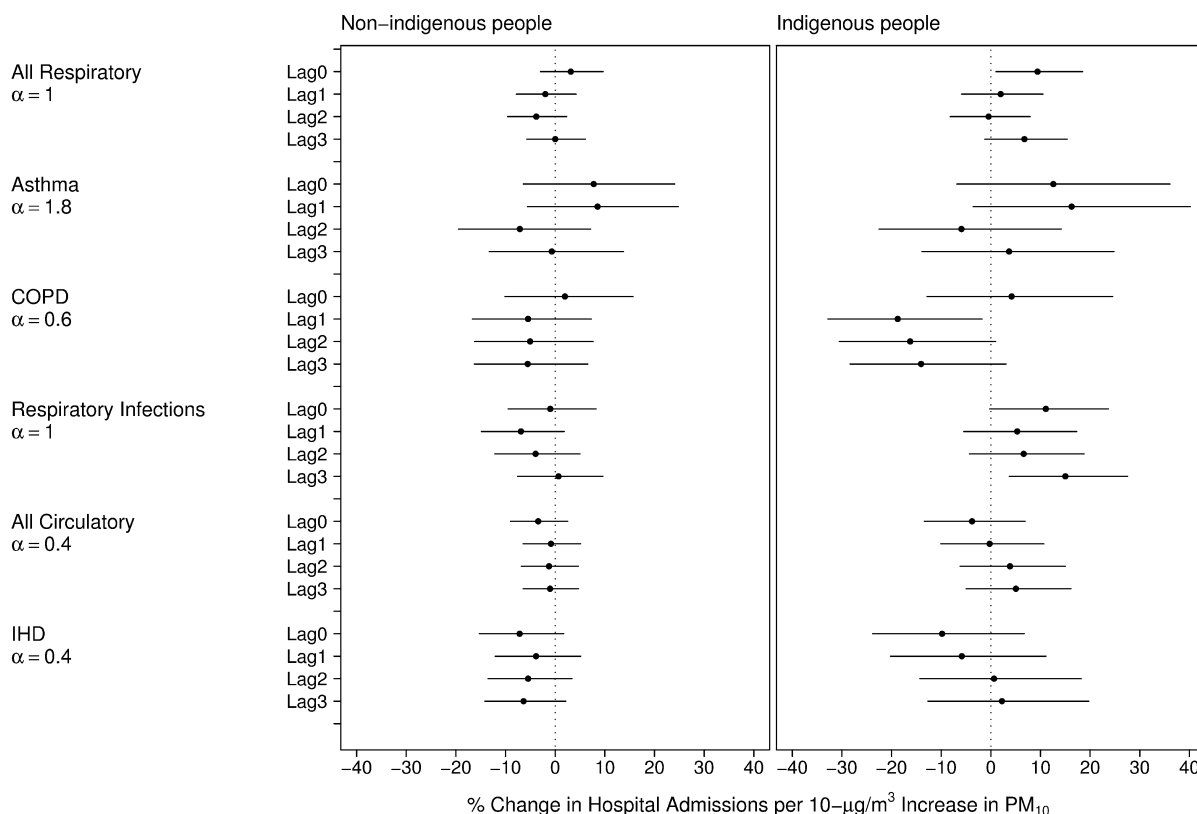
While we report our findings for several diagnostic sub-categories, the numbers in these groups, especially asthma and COPD, were much smaller and our confidence in effect estimates is greatest for the total respiratory and total cardiovascular classifications.

Our observed negative association with COPD admissions was unexpected as previous biomass studies have generally found strong positive associations with this outcome [33-36]. This could be due to hospital admission practices as in many instances patients presenting with exacerbations of asthma and COPD will be discharged home from the emergency department and therefore not be included in admissions data. However insufficient emergency department data were available for examination. Alternately it may be that persons with pre-existing chronic respiratory conditions take extra precautions with their care during days when PM levels are noticeably extreme.

In addition these counterintuitive results may be due to chance reflecting the low precision of our estimates due to the relatively small numbers of daily admissions. The lack of precision in our estimates could also be a function of other factors, such as uncertainty in exposure estimates, variation in population response, and even the lack of any association. However our findings are consistent with other studies of ambient biomass smoke and contribute to the limited evidence concerning the health effects of vegetation fire PM<sub>10</sub>.

A previous case-crossover study in Darwin had similar findings to this study with positive associations reported between observed ambient PM<sub>10</sub> and respiratory admissions with Odds Ratio (OR) 1.08 (95%CI: 0.98, 1.18) and a tendency towards negative associations with cardiovas-





**Figure 3**  
**Associations between hospitalizations for non-indigenous and indigenous people with estimated ambient PM<sub>10</sub>.** Point estimates and 95% confidence intervals for the association between hospital admissions for non-indigenous and indigenous people with estimated ambient PM<sub>10</sub> in Darwin 1996–2005, as the percentage change in relative risk per 10 µg/m<sup>3</sup> rise in PM<sub>10</sub>. α represents the optimal level of a multiplication factor for the smooth function of time, selected using sensitivity analysis.

cular admissions (OR 0.91; 95%CI: 0.81,1.02) [23]. Similarly, the estimates from that analysis for total respiratory admissions were also approximately double for indigenous rather than non-indigenous people.

A study in Christchurch, New Zealand, where ambient PM<sub>10</sub> predominantly arises from the combustion of wood for domestic heating, found a 3.37% (95%CI: 2.34%, 4.40%) increase in total respiratory admissions per interquartile rise in ambient PM<sub>10</sub> (IQR = 14.8 µg/m<sup>3</sup>) at a lag of 2 days [33]. That study found an association with admissions for heart failure but not other cardiac diagnoses, while a later study in Christchurch found no association with cardiovascular admissions [37].

In a study of the South East Asian forest fires of 1997 Mott *et al* [34] found large fire-period related increases in respiratory hospitalizations for asthma and COPD, ranging from 40–80% in adults but no association with cardiovas-

cular admissions although people with pre-existing cardio-respiratory diagnoses were at greatest risk.

A recent study from Brisbane, Australia, directly compared the association between bushfire and non-bushfire derived particulates on total respiratory hospital admissions excluding influenza [3]. That study analyzed the PM<sub>10</sub> distribution as a three-level factor with levels defined as low (< 15 µg/m<sup>3</sup>), medium (15–20 µg/m<sup>3</sup>) and high (> 20 µg/m<sup>3</sup>). They found that for an increase in same-day PM<sub>10</sub> from low to high there was an increase in the relative risk for total respiratory hospital admissions of 19% (95%CI: 9%, 30%) whereas on non-bushfire days the associated increase was 13% (95%CI: 6%, 23%).

A similar study from Sydney, Australia, directly compared associations between cardio-respiratory hospitalizations and ambient PM<sub>10</sub> derived from vegetation fire smoke with associations between these outcomes and ambient PM<sub>10</sub> derived from other sources [4]. They apportioned

ambient PM<sub>10</sub> on vegetation fire days into particulate matter derived from burning biomass and particulates due to other sources. They found a 1.24% (95%CI: 0.22%, 2.27%) increase in relative risk for all respiratory admissions per 10 µg/m<sup>3</sup> increase in vegetation fire derived ambient PM<sub>10</sub> at lag 0. Ambient PM<sub>10</sub> due to other sources at lag 0 was associated with an increase in all respiratory admissions of 1.04% (95%CI: 0.02%, 2.07%) per 10 µg/m<sup>3</sup> increase. They also failed to find an association between cardiovascular outcomes and vegetation fire smoke in contrast to findings of a positive association between cardiovascular admissions and ambient PM<sub>10</sub> from all other (non bushfire) sources.

The magnitude of the point estimates for all respiratory admissions from our study, the studies discussed above and several other studies of outpatient attendances for respiratory conditions in association with vegetation fires [33,34,38-41], are much greater than multi-city studies of associations between admissions for respiratory diseases (including asthma, COPD, and total respiratory admissions) with positive associations for a 10 µg/m<sup>3</sup> change in ambient PM<sub>10</sub> of the order of just 1–1.5% [42,43]. Dominici *et al* 2006 found similar associations of around 1% increase in respiratory admissions per 10 µg/m<sup>3</sup> change in PM<sub>2.5</sub> [28]. The greater magnitude of adverse respiratory effects reported in studies specifically examining biomass smoke might reflect a true difference in the adverse outcomes associated with this source of PM. However, studies of biomass smoke are usually conducted in cities and towns with small populations, or around short episodes of extreme exposures, and their results inevitably are less precise than those from multi-city studies making direct comparisons difficult to interpret. Similarly, the absent or negative associations between biomass smoke and cardiovascular disease outcomes in our study and in three previous studies of vegetation fire smoke [4,23,34], might also reflect a different pattern of adverse health outcomes from biomass smoke. However these findings require replication as cardiovascular admissions have been clearly associated with ambient PM<sub>10</sub> in many large studies, usually conducted in urban settings where fossil fuel combustion is a major source of PM [1].

The primary strengths of this study are the spatially homogenous population exposure to particulates across Darwin [17], the specific source from vegetation fires [15], the hospital data collection which represents the admissions patterns for the entire population of the city and the inclusion of details of indigenous status in the health records. These factors all minimized the problems of exposure and outcome misclassification inherent in population-level studies. Additionally, due to Darwin's tropical climate, there was minimal variation of daily

temperature and humidity minimizing confounding by meteorological changes.

An important limitation of this study is the lack of air quality data, necessitating our use of an estimate based upon daily visibility. This inevitably will have introduced exposure misclassification bias limiting our ability to detect associations that might be present. In addition, because of the small population of Darwin, there were low numbers of daily admissions for cardio-respiratory diseases in spite of our relatively long 10-season period of data for analysis. This limited the statistical power and reduced the precision of our point estimates. However, population-level studies of the health effects of ambient biomass smoke have inherent limitations. Vegetation fire events affecting large populations are rare, unpredictable and often of short duration. In addition settings where biomass is the predominant source of ambient particulate matter tend to have smaller populations as larger cities will have a more complex mix of pollutants often dominated by fossil fuel combustion by industry and transport. For this reason the results from studies specifically examining vegetation fire smoke pollution will almost inevitably have greater technical challenges than studies examining ambient PM regardless of source.

A key reason why PM<sub>10</sub> effect estimates may differ by region is the different sources and resulting chemical composition of particles, such as the biomass burning noted here. Most of the literature concerning chemical composition compares different size classes, such as PM<sub>10</sub>, PM<sub>2.5</sub>, PM<sub>2.5-10</sub> and PM<sub>1</sub> and while all size classes have been associated with adverse health outcomes, smaller particles have generally been found to be relatively more toxic [1]. Our study could not examine different size classes however, a detailed study of PM in Darwin during 2004–5 found that the total PM<sub>2.5</sub> comprised on average 56% of the total PM [44].

In addition to the different ratios of size fractions, bushfire derived PM is associated with a distinctive suite of toxic co-pollutants including metals, organic and inorganic compounds [9]. In vitro studies have demonstrated that different chemical compositions induce different cellular responses [45]. Moreover a few epidemiological studies have apportioned total PM according to a range of sources (such as biomass, crustal and motor vehicles) have found that the magnitude of a range of different clinical outcomes were associated with different exposure sources. A study of hospitalizations in Copenhagen, Denmark found respiratory outcomes to be predominantly associated with biomass particulates and crustal and secondary particulate sources with cardiovascular outcomes [7]. However in that study asthma was more closely associated with markers of car exhaust. A study of mortality in

Phoenix, USA found that secondary sulfate, traffic, and copper smelter-derived particles were most consistently associated with cardiovascular mortality while biomass derived particulates were not [8]. These source apportionment studies are compatible with the few studies, including ours, that have specifically examined biomass smoke derived PM.

Our study also compared rates of admissions between indigenous and non-indigenous subpopulations finding the suggestion of disproportionate burdens of health effects due to the seasonal fire smoke pollution; especially a statistically different association between PM<sub>10</sub> and admissions for respiratory infections three days later. This is consistent with the only previous study examining this issue in Australia [23]. Many factors could contribute to this including excess socio-economic disadvantage, chronic cardio-respiratory diseases and diabetes [21] which all modify the effects of ambient PM<sub>10</sub> on cardio-respiratory admissions [20]. Other factors could include reduced access to health services and therefore early management of chronic conditions [46], and different patterns of smoking, physical activity or diet among this population sub-group [21]. In addition, the two populations have differing age structures, with a greater proportion of people over sixty-five in the non-indigenous group, and a greater proportion of children less than 15 years in the indigenous group [19]. The former factor could result in an underestimate of the difference between the two population groups, while the latter could have contributed to the differences in respiratory infections observed between the two groups. We have attempted to control for this age-structure effect by including a term for indigenous status which should capture this. Residential segregation is less likely to explain the difference in this setting as exposure is relatively uniform across the city [17].

## Conclusion

Our results suggest associations between vegetation fire smoke and daily hospital admissions for respiratory diseases that were stronger in indigenous people. The analysis found approximately three-fold higher associations between same-day estimated ambient PM<sub>10</sub> and total respiratory admissions in indigenous people than non-indigenous people. This has implications for local public health policy and practice, such as the identification of sensitive sub-groups, the setting of air quality guidelines, targeting of public health messages in relation to air pollution and the regulation of deliberate burning practices [22].

This is an important research area to pursue. With global change bringing changes in vegetation burning regimes and increasing population exposures to pollution from vegetation fires, understanding and managing the health

impacts of biomass combustion smoke will become an increasingly important public health activity.

## Abbreviations

CI: Confidence interval; COPD: Chronic Obstructive Pulmonary Disease; ICD10: International Classification of Diseases, 10th Revision; ICD9: International Classification of Diseases: 9th Revision. IHD: Ischemic Heart Disease; OR: Odds ratio; PM: Particulate Matter; The aerodynamic diameter of the particles is shown by the additional of the size range in microns as subscripts. For instance PM with diameter less than or equal to 10 microns is PM<sub>10</sub>, PM with diameter less than or equal to 2.5 microns is PM<sub>2.5</sub> and so forth.

## Competing interests

The authors declare that they have no competing interests.

## Authors' contributions

ICH carried out the analysis and drafted the manuscript. FHJ conceived the study and helped to draft the manuscript. GGM provided theoretical and conceptual guidance and helped to draft the manuscript. All authors have read and approved this version of the manuscript.

## Acknowledgements

David Parry, Michael Foley, Judy Manning, Françoise Foti and Debbie Turner all contributed to data acquisition for this study. David Bowman provided overall support and advice. Daily weather data for Bureau of Meteorology stations were provided by the National Climate Centre (Melbourne, Victoria).

The study was funded by an Australian Research Council linkage grant (grant number: LP0348543) with cash and in kind support from the Northern Territory Government and Bureau of Meteorology. FJ was supported by a scholarship from Australia's National Health and Medical Research Council.

## References

1. Pope CA, Dockery DW: **Health effects of fine particulate air pollution: lines that connect.** *J Air Waste Manag Assoc* 2006, **56(6)**:709-742.
2. Laden F, Neas LM, Dockery DW, Schwartz J: **Association of fine particulate matter from different sources with daily mortality in six U.S. cities.** *Environ Health Perspect* 2000, **108(10)**:941-947.
3. Chen L, Verrall K, Tong S: **Air particulate pollution due to bushfires and respiratory hospital admissions in Brisbane, Australia.** *Int J Environ Health Res* 2006, **16(3)**:181-191.
4. Morgan G, Sheppard V, Khalaj B, Ayyar A, Lincoln D, Lumley T, Jalaludin B, Beard J, Corbett S: **The effects of bushfire smoke on daily mortality and hospital admissions in a major city [abstract].** *Epidemiology* 2006, **17(6)**:S160.
5. Boman BC, Forsberg AB, Jarvholm BG: **Adverse health effects from ambient air pollution in relation to residential wood combustion in modern society.** *Scand J Work Environ Health* 2003, **29(4)**:251-260.
6. Thurston GD, Ito K, Mar T, Christensen WF, Eatough DJ, Henry RC, Kim E, Laden F, Lall R, Larson TV, Liu H, Neas L, Pinto J, Stolzel M, Suh H, Hopke PK: **Workgroup report: workshop on source apportionment of particulate matter health effects - inter-comparison of results and implications.** *Environ Health Perspect* 2005, **113(12)**:1768-1774.

7. Andersen ZJ, Wahlin P, Raaschou-Nielsen O, Ketzler M, Scheike T, Loft S: **Size distribution and total number concentration of ultrafine and accumulation mode particles and hospital admissions in children and the elderly in Copenhagen, Denmark.** *Occup Environ Med* 2008, **65**:458-66.
8. Mar TF, Ito K, Koenig JQ, Larson TV, Eatough DJ, Henry RC, Kim E, Laden F, Lall R, Neas L, Stolzel M, Paatero P, Hopke PK, Thurston GD: **PM source apportionment and health effects 3. Investigation of inter-method variations in associations between estimated source contributions of PM<sub>2.5</sub> and daily mortality in Phoenix, AZ.** *J Expo Sci Environ Epidemiol* 2006, **16**(4):311-320.
9. Naeher LP, Brauer M, Lipsett M, Zelikoff JT, Simpson CD, Koenig JQ, Smith KR: **Woodsmoke health effects: a review.** *Inhal Toxicol* 2007, **19**(1):67-106.
10. Koopmans A: **Trends in energy use.** In *Proceedings of the Expert Consultation on Wood Energy, Climate and Health: 7-9 October 1999; Phuket, Thailand* The Regional Wood Energy Development Programme of the Food and Agriculture Organization of the United Nations ; 1999.
11. The Association for Fire Ecology: **The San Diego declaration on climate change and fire management.** San Diego ; 2006.
12. Sapkota A, Symons JM, Kleissl J, Wang L, Parlange MB, Ondov J, Breyse PN, Diette GB, Eggleston PA, Buckley TJ: **Impact of the 2002 Canadian forest fires on particulate matter air quality in Baltimore city.** *Environ Sci Technol* 2005, **39**(1):24-32.
13. Ellis S, Kanowski P, Whelan R: **National inquiry on bushfire mitigation and management.** 2004 [<http://www.coagbushfireinquiry.gov.au/findings.htm>]. Canberra , Commonwealth Government of Australia
14. Williams RJ, Griffiths AD, Allan GE: **Fire regimes and biodiversity in the savannas of northern Australia.** In *Flammable Australia: the fire regimes and biodiversity of a continent* Edited by: Williams JE, Bradstock RA, Gill M. New York , Cambridge University Press; 2002:281-304.
15. Gras J, Parry D, Jong T, Mungksaad N, Ayers G, Keywood M, Boast K, Powell J, Selleck P, Firestone T: **A pilot study of the air quality in Darwin NT.** Darwin , Government of the Northern Territory of Australia; 2001.
16. Artaxo P, Parry D, Gillett R, Selleck P, Ayers G: **Black carbon, elemental and ionic composition of atmospheric aerosols in northern Australia.** *Global Atmosphere Watch* 1995, **107**:186-189.
17. Bowman D, Dingle JK, Johnston FH, Parry D, Foley M: **Seasonal patterns in biomass smoke pollution and the mid 20th-century transition from Aboriginal to European fire management in northern Australia.** *Glob Ecol Biogeogr* 2007, **16**(2):246-256.
18. Russell-Smith J, Yates C, Edwards A, Allan GE, Cook GD, Cooke P, Craig R, Heath B, Smith R: **Contemporary fire regimes of northern Australia, 1977-2001: change since Aboriginal occupancy, challenges for sustainable management.** *International Journal of Wildland Fire* 2003, **12**(3-4):283-297.
19. Australian Bureau of Statistics: **Experimental estimates and projections, Aboriginal and Torres Strait Islander Australians, 1991-2009 (Cat. No. 3238.0).** Canberra, Australia , Australian Bureau of Statistics; 2004.
20. O'Neill MS, Jerrett M, Kawachi L, Levy JL, Cohen AJ, Gouveia N, Wilkinson P, Fletcher T, Cifuentes L, Schwartz J: **Health, wealth, and air pollution: advancing theory and methods [review].** *Environ Health Perspect* 2003, **111**(16):1861-1870.
21. Trewin D: **National Aboriginal and Torres Strait Islander health survey, 2004-05 (Cat. No. 4715.0).** 2006 [[http://www.ausstats.abs.gov.au/ausstats/subscriber.nsf/0/B1BCF4E6DD320A0BCA25714C001822BC/\\$File/47150\\_2004\\_Q5.pdf](http://www.ausstats.abs.gov.au/ausstats/subscriber.nsf/0/B1BCF4E6DD320A0BCA25714C001822BC/$File/47150_2004_Q5.pdf)]. Canberra, Australia , Australian Bureau of Statistics
22. Environment Protection and Heritage Council: **Co-operative studies on priority air quality and health related issues: asthma research – a background paper.** Canberra ; 2003.
23. Johnston FH, Bailie RS, Pilotto LS, Hanigan IC: **Ambient biomass smoke and cardio-respiratory hospital admissions in Darwin, Australia.** *BMC Public Health* 2007, **7**(1):240.
24. Peters A, von Klot S, Berglind N, Hoermann A, Loewel H, Nyberg F, Pekkanen J, Perucci CA, Stafoggia M, Sunyer J, Tiittanen P, Forastiere F: **Comparison of different methods in analyzing short-term air pollution effects in a cohort study of susceptible individuals.** *Epidemiol Perspect Innov* 2006, **3**(1):10.
25. Health Effects Institute: **Revised analyses of time-series studies of air pollution and health. Special report.** Boston ; 2003.
26. Dominici F, McDermott A, Hastie TJ: **Improved semiparametric time series models of air pollution and mortality.** *J Am Stat Assoc* 2004, **99**(468):938-948.
27. Peng RD, Dominici F, Louis TA: **Model choice in time series studies of air pollution and mortality.** *J R Stat Soc Ser A Stat Soc* 2006, **169**(2):179-203.
28. Dominici F, Peng RD, Bell ML, Pham L, McDermott A, Zeger SL, Samet JM: **Fine particulate air pollution and hospital admission for cardiovascular and respiratory diseases.** *JAMA* 2006, **295**(10):1127-1134.
29. Peng RD, Welty LJ: **The NMMAPSdata package.** [<http://www.ihapss.jhsph.edu/data/NMMAPS/R/>].
30. Peng RD: **Medicare Air Pollution Study (MCAPS) functions for fitting single county models.** [<http://www.biostat.jhsph.edu/MCAPS/modeling.R>].
31. Medina S, Plasencia A: **Air Pollution and Health: a European Information System (APHEIS).** Saint-Maurice , Institut de Veille Sanitaire; 2001.
32. R Development Core Team: **R: a language and environment for statistical computing.** [<http://www.R-project.org/>].
33. McGowan JA, Hider RN, Chacko E, Town GI: **Particulate air pollution and hospital admissions in Christchurch, New Zealand.** *Aust N Z J Public Health* 2002, **26**(1):23-29.
34. Mott JA, Mannino DM, Alverson CJ, Kiyu A, Hashim J, Lee T, Falter K, Redd SC: **Cardiorespiratory hospitalizations associated with smoke exposure during the 1997, Southeast Asian forest fires.** *Int J Hyg Environ Health* 2005, **208**(1-2):75-85.
35. Sutherland ER, Make BJ, Vedal S, Zhang L, Dutton SJ, Murphy JR, Silkoff PE: **Wildfire smoke and respiratory symptoms in patients with chronic obstructive pulmonary disease.** *J Allergy Clin Immunol* 2005, **115**(2):420-422.
36. Orozco-Levi M, Garcia-Aymerich J, Villar J, Ramirez-Sarmiento A, Anto JM, Gea J: **Wood smoke exposure and risk of chronic obstructive pulmonary disease.** *Eur Respir J* 2006, **27**(3):542-546.
37. Barnett AG, Williams GM, Schwartz J, Best TL, Neller AH, Petroeschewsky AL, Simpson RW: **The effects of air pollution on hospitalizations for cardiovascular disease in elderly people in Australian and New Zealand cities.** *Environ Health Perspect* 2006, **114**(7):1018-1023.
38. Johnston FH, Kavanagh AM, Bowman DM, Scott RK: **Exposure to bushfire smoke and asthma: an ecological study.** *Med J Aust* 2002, **176**(11):535-538.
39. Anonymous: **From the Centers for Disease Control and Prevention. Surveillance of morbidity during wildfires--Central Florida, 1998.** *JAMA* 1999, **281**(9):789-790.
40. Duclos P, Sanderson LM, Lipsett M: **The 1987 forest fire disaster in California: assessment of emergency room visits.** *Arch Environ Health* 1990, **45**(1):53-58.
41. Emmanuel SC: **Impact to lung health of haze from forest fires: the Singapore experience.** *Respirology* 2000, **5**(2):175-182.
42. Atkinson RW: **Acute effects of air pollution on admissions. Reanalysis of APHEA 2.** *Am J Respir Crit Care Med* 2004, **169**:1257-1258.
43. Samet JM, Zeger SL, Dominici F, Curriero F, Coursac I, Dockery DW, Schwartz J, Zanobetti A: **The National Morbidity, Mortality, and Air Pollution Study Part II: morbidity and mortality from air pollution in the United States.** Cambridge, Massachusetts , Health Effects Institute; 2000.
44. Johnston FH, Webby J, Pilotto L, Bailie R, Parry D, Halpin S: **Vegetation fires, particulate air pollution and asthma: a panel study in the Australian monsoon tropics.** *Int J Environ Health Res* 2006, **16**(6):391-404.
45. Schwarze PE, Ovrevik J, Hetland RB, Becher R, Cassee FR, Lag M, Lovik M, Dybing E, Refsnes M: **Importance of size and composition of particles for effects on cells in vitro.** *Inhal Toxicol* 2007, **19**(Suppl 1):17-22.
46. Peachey LG, McBain KE, Armstrong RM: **Indigenous health: burden or opportunity?** *Med J Aust* 2006, **184**(10):483-484.