

RESEARCH

Open Access



# Association between long-term exposure to ambient air pollution and prevalence of diabetes mellitus among Malaysian adults

Shew Fung Wong<sup>1,2\*</sup>, Poh Sin Yap<sup>1,3</sup>, Joon Wah Mak<sup>1,2,3</sup>, Wan Ling Elaine Chan<sup>1</sup>, Geok Lin Khor<sup>3</sup>, Stephen Ambu<sup>1,2,3</sup>, Wan Loy Chu<sup>1,2,3</sup>, Maria Safura Mohamad<sup>4</sup>, Norazizah Ibrahim Wong<sup>4</sup>, Nur Liana Ab. Majid<sup>4</sup>, Hamizatul Akmal Abd. Hamid<sup>4</sup>, Wan Shakira Rodzlan Hasani<sup>4</sup>, Muhammad Fadhli bin Mohd Yusoff<sup>4</sup>, Hj. Tahir bin Aris<sup>4</sup>, EzahTulsyahreen Bt. Ab. Rahman<sup>5</sup> and Zaleha Bt. M. Rashid<sup>5</sup>

## Abstract

**Background:** Malaysia has the highest rate of diabetes mellitus (DM) in the Southeast Asian region, and has ongoing air pollution and periodic haze exposure.

**Methods:** Diabetes data were derived from the Malaysian National Health and Morbidity Surveys conducted in 2006, 2011 and 2015. The air pollution data (NO<sub>x</sub>, NO<sub>2</sub>, SO<sub>2</sub>, O<sub>3</sub> and PM<sub>10</sub>) were obtained from the Department of Environment Malaysia. Using multiple logistic and linear regression models, the association between long-term exposure to these pollutants and prevalence of diabetes among Malaysian adults was evaluated.

**Results:** The PM<sub>10</sub> concentration decreased from 2006 to 2014, followed by an increase in 2015. Levels of NO<sub>x</sub> decreased while O<sub>3</sub> increased annually. The air pollutant levels based on individual modelled air pollution exposure as measured by the nearest monitoring station were higher than the annual averages of the five pollutants present in the ambient air. The prevalence of overall diabetes increased from 11.4% in 2006 to 21.2% in 2015. The prevalence of known diabetes, underdiagnosed diabetes, overweight and obesity also increased over these years. There were significant positive effect estimates of known diabetes at 1.125 (95% CI, 1.042, 1.213) for PM<sub>10</sub>, 1.553 (95% CI, 1.328, 1.816) for O<sub>3</sub>, 1.271 (95% CI, 1.088, 1.486) for SO<sub>2</sub>, 1.124 (95% CI, 1.048, 1.207) for NO<sub>2</sub>, and 1.087 (95% CI, 1.024, 1.153) for NO<sub>x</sub> for NHMS 2006. The adjusted annual average levels of PM<sub>10</sub> [1.187 (95% CI, 1.088, 1.294)], O<sub>3</sub> [1.701 (95% CI, 1.387, 2.086)], NO<sub>2</sub> [1.120 (95% CI, 1.026, 1.222)] and NO<sub>x</sub> [1.110 (95% CI, 1.028, 1.199)] increased significantly from NHMS 2006 to NHMS 2011 for overall diabetes. This was followed by a significant decreasing trend from NHMS 2011 to 2015 [0.911 for NO<sub>2</sub>, and 0.910 for NO<sub>x</sub>].

(Continued on next page)

\* Correspondence: [shewfung\\_wong@imu.edu.my](mailto:shewfung_wong@imu.edu.my)

<sup>1</sup>Institute for Research, Development and Innovation (IRDI), International Medical University, 57000 Kuala Lumpur, Malaysia

<sup>2</sup>School of Medicine, International Medical University, 57000 Kuala Lumpur, Malaysia

Full list of author information is available at the end of the article



© The Author(s). 2020 **Open Access** This article is licensed under a Creative Commons Attribution 4.0 International License, which permits use, sharing, adaptation, distribution and reproduction in any medium or format, as long as you give appropriate credit to the original author(s) and the source, provide a link to the Creative Commons licence, and indicate if changes were made. The images or other third party material in this article are included in the article's Creative Commons licence, unless indicated otherwise in a credit line to the material. If material is not included in the article's Creative Commons licence and your intended use is not permitted by statutory regulation or exceeds the permitted use, you will need to obtain permission directly from the copyright holder. To view a copy of this licence, visit <http://creativecommons.org/licenses/by/4.0/>. The Creative Commons Public Domain Dedication waiver (<http://creativecommons.org/publicdomain/zero/1.0/>) applies to the data made available in this article, unless otherwise stated in a credit line to the data.

(Continued from previous page)

**Conclusion:** The findings of this study suggest that long-term exposure to O<sub>3</sub> is an important associated factor of underdiagnosed DM risk in Malaysia. PM<sub>10</sub>, NO<sub>2</sub> and NO<sub>x</sub> may have mixed effect estimates towards the risk of DM, and their roles should be further investigated with other interaction models. Policy and intervention measures should be taken to reduce air pollution in Malaysia.

**Keywords:** Nitrogen dioxide (NO<sub>2</sub>), Sulphur dioxide (SO<sub>2</sub>), Ozone (O<sub>3</sub>), Particular matters (PM<sub>10</sub>), Air pollution, Diabetes

## Introduction

According to the International Diabetes Federation (IDF) Western Pacific statistics, 3.5 million cases of diabetes mellitus type 2 (T2DM) were reported in Malaysia in 2017, and the prevalence rate in adults (20–79 years) was 16.9% [1]. The prevalence of T2DM among Malaysian adults has increased from 6.3% in 1986 to 17.5% in 2015 [2, 3]. During this period of time, the prevalence of overweight and obesity among Malaysians has escalated [4], in tandem with the global situation.

T2DM has been attributed to several risk factors. Among these, genetics, lifestyles, or in combination have been extensively studied [5, 6]. Environmental factors that have been linked to T2DM include air pollution, unhealthy diet and lack of physical activity [7, 8].

Environmental stimuli such as pollutants can activate intracellular signalling pathways which alter the gene expression through epigenetic modifications such as DNA methylation and histone post-translational modifications. In addition, exposure to higher ambient levels of pollutants such as NO<sub>2</sub> and PM<sub>2.5</sub> was found to be associated with lower and declined insulin sensitivity, increased  $\beta$ -cell dysfunction and increased adipose deposition or obesity [9, 10].

The association between air pollution and the development of diabetes has been reported worldwide. In Switzerland, Eze et al. [11] found that both long-term exposure to PM<sub>10</sub> and NO<sub>2</sub> even at the concentrations below the air quality guidelines was associated with increased prevalence of diabetes mellitus in a cohort study [11]. Another study in Germany showed that individuals with higher genetic risk for diabetes, such as those with altered insulin sensitivity, were more susceptible to the exposure of PM<sub>10</sub> where the odds of diabetes increased by 8% per risk allele and 35% per 10  $\mu\text{g}/\text{m}^3$  exposure to PM<sub>10</sub> [12]. In addition, hazards of diabetes were found to increase by 15–42% per interquartile range (IQR) of traffic-related particular matters and NO<sub>2</sub> exposure in elderly women in a study conducted in West Germany [13].

Ambient air pollution increased mortality resulting from respiratory and cardiovascular diseases as well as diabetes mellitus [14]. Urban traffic is one of the major sources of ambient air pollution, followed by industrial and biomass burning. All these sources release fine

particles and gaseous pollutants into the atmosphere which will eventually induce systemic oxidative stress and inflammatory responses [14]. Malaysia is one of the developing countries with high levels of outdoor and indoor air pollution from motor vehicles, industries and biomass. Since 1991, haze largely due to fire-related air pollution occurs regularly subsequent to large-scale agricultural and forest burning in the region [15]. All these sources release particulate matters such as toxic metals, carbon monoxide, oxides of sulphur and nitrogen, which are harmful to human health and the ecosystem. Several studies have reported short-term adverse effects of air pollution on public health during these haze periods [16–19]. Exposure to haze and air pollutants may cause irritation to eyes, nose and throat, eczema, allergy, asthma, bronchitis and other systemic health problems including cardiovascular diseases.

Emissions from motor-vehicles and industries in Asian countries are under-regulated, compared with Western countries [20]. The situation is further worsened by trans-boundary haze associated with biomass burning. To date, limited studies have been conducted in Malaysia that assessed adverse health impacts from exposure to air pollutants. We aimed to determine the association between exposure to air pollution and prevalence of diabetes mellitus in the Malaysian population.

## Methods

### Study population

Data on status including diabetes, body mass index and physical activity reported in this study were derived from three national cross-sectional health surveys, namely the National Health and Morbidity Surveys undertaken in 2006, 2011 and 2015 [21–23]. Each survey included representative samples of men and women throughout Malaysia. The representative samples were derived from a 2-stage stratified random sampling of the population based on the proportionate of the population size as determined using the Enumeration Blocks (EBs, made up of states of Malaysia including Federal Territories), followed by Living Quarters (LQs, made up of urban/rural areas). The urban area is gazetted area with a combined population of 10,000 or more at the time of census while the rural area is with less than 10,000

individuals. Each EB had an average of 100 LQ while each LQ was estimated to house 4.4 individuals. All individuals of the selected LQ were included for the survey after obtaining their consents. The sampling frame was recommended by Department of Statistics, Malaysia. Details of the NHMS study's methodology has been published elsewhere [21–23] (<http://iku.moh.gov.my/index.php>). Informed consent was obtained from each participant. Thumb print was taken from illiterate subjects in the presence of a witness. The NHMS surveys were approved by the Malaysian Medical and Research Ethnic Committee, Ministry of Health Malaysia (NMRR-16-424-29,188 (IIR)). The present study was approved by the International Medical University Joint-Committee on Research and Ethics (reference no: 4.11/JCM-110/2016).

While the NHMS data included Malaysians of all ages, participants aged 17 and below were excluded from this analysis in order to exclude Type 1 diabetes in the present study. In Malaysia, most Type 1 diabetes (> 70%) patients were diagnosed at ages below 15 years [24]. Social-demographic information was gathered from consented respondents by a trained nurse using a structured questionnaire. Fasting blood glucose of each respondent was determined. The prevalence of known diabetes was determined by asking the participants whether they had been medically diagnosed with diabetes. Underdiagnosed diabetes cases reported in the three surveys refer to those participants who are not aware that they are having diabetes and were identified based on the definition of the diagnostic criteria of the World Health Organisation for fasting capillary blood glucose equal or more than 6.1 mmol/L, or non-fasting glucose of more than 11.1 mmol/L [25]. Overall diabetes prevalence was calculated as the sum of known diabetes and the underdiagnosed diabetes.

Participants were determined as active when the physical activity achieved a minimum of at least 600 Metabolic Equivalent of Task (MET)-minutes per week according to the Global Physical Activity Questionnaire (GPAQ) for year 2006, and the International Physical Activity Questionnaire (IPAQ) for years 2011 and 2015. As for body weight status, body mass index (BMI) as classified according to the World Health Organisation [26] was used: underweight: < 18.5 kg/m<sup>3</sup>; normal: BMI 18.5–24.9 kg/m<sup>3</sup>; overweight: 25.0–29.9 kg/m<sup>3</sup>; and obese: 30.0 kg/m<sup>3</sup> and above.

#### Air pollution data

The daily air pollution data on nitrogen oxide (NO<sub>x</sub>), nitrogen dioxide (NO<sub>2</sub>), sulphur dioxide (SO<sub>2</sub>), ozone (O<sub>3</sub>), and particulate matters less than 10 µg/m<sup>3</sup> (PM<sub>10</sub>) were obtained from the Department of Environment Malaysia (DOE). These five ambient air pollution data

recorded by the Continuous Air Quality Monitoring (CAQM) stations were collected from 2006 to 2015 in all the 13 states and three Federal Territories of Malaysia. There are 52 monitoring stations which are strategically located at different industrial (25%), urban (29%), suburban (38%) and background areas (8%) respectively in Malaysia [27]. The monitoring stations at industrial sites are located in almost every state of Malaysia except for Perlis, Kedah, Sabah, and three Federal Territories of Malaysia i.e. Putrajaya, Kuala Lumpur and Labuan.

Data of the five ambient air pollution parameters were recorded hourly per day. For states with more than one monitoring station, the annual averages of the five ambient air pollution parameters were calculated using the averages across all monitoring stations within the same state. Air monitoring stations with more than 25% missing records per year were excluded from the annual calculation of the five ambient air pollution parameters for the same state or Federal Territory. The overall pollution exposure for each participant was calculated as the average level of exposure over the year and was assigned to the participants of the three NHMS surveys based on the air monitoring station that is most adjacent to the residential coordinate. In those states with multiple monitoring stations, an average reading per parameter was presented as a whole in this study. As for the individual exposure, each individual was matched to the nearest monitoring station data points/parameters during the analysis based on the coordinates (latitude and longitude) of the residential address and monitoring station.

#### Statistical analysis

Data was analysed using Statistical Analysis Software (version 9.3 SAS Institute Inc., Cary, NC). Since the NHMS survey has a complex design, PROC SURVEYFREQ and PROC SURVEYLOGISTIC procedures along with sample weights were performed to assess the prevalence of overall diabetes, known diabetes, and underdiagnosed diabetes.

The model used to assign the baseline individual exposure was determined using a different cohort of consented subjects in 1996 based on their postal codes, regardless of the data availability in other years. That cohort had similar age distribution and proportion of immigrants as the current cohort of this study (results not shown). Here, the associations of O<sub>3</sub>, PM<sub>10</sub> and NO<sub>2</sub> with non-accidental mortality were nearly identical (i.e. 1.034, 95% CI: 1.028, 1.039); similar but with attenuated associations (i.e., 1.025; 95% CI: 1.020, 1.031); and notably weaker evidence of an association (i.e., 1.017; 95% CI: 1.009, 1.025) respectively to those reported in the main models of this study.

Logistic regression models were used to adjust for the following predictors: age, ethnicity, urban and rural, gender, and the 2006, 2011 and 2015 annual averages of air pollution for NO<sub>x</sub>, NO<sub>2</sub>, SO<sub>2</sub>, O<sub>3</sub>, and PM<sub>10</sub> per IQR increment of 16.83 µg/m<sup>3</sup>, 9.57 µg/m<sup>3</sup>, 4.16 µg/m<sup>3</sup>, 7.83 µg/m<sup>3</sup>, and 10.34 µg/m<sup>3</sup> respectively. Significant interactions in terms of survey year and each air pollution measurement from the logistic models were assessed to determine if changes in the prevalence of diabetes occurred throughout the nine-year period. The adjusted odds ratios (OR) and 95% confidence intervals (CI) of overall diabetes, known diabetes and underdiagnosed diabetes over time according to annual average air pollution levels were calculated.

## Results

The characteristics of the respondents included in the three NHMS surveys are presented in Table 1. Overall, the distributions of age, sex and ethnicity were relatively similar across these surveys. The prevalence of overall

diabetes for all age groups increased from 11.4% in 2006 to 21.2% in 2015 (Fig. 1a). Similarly, the prevalence of known diabetes and underdiagnosed diabetes increased across the surveys (Fig. 1a). The prevalence of overweight and obesity also showed an increase during the surveys (Fig. 1b).

The annual average levels of NO<sub>x</sub>, NO<sub>2</sub>, SO<sub>2</sub>, O<sub>3</sub> and PM<sub>10</sub> in the different states and Federal Territories from the year 1996 to 2015 are presented in Supplementary Fig. 1. The annual average levels of NO<sub>x</sub>, NO<sub>2</sub>, SO<sub>2</sub>, O<sub>3</sub> and PM<sub>10</sub> from 2006 to 2015 and during the NHMS surveys are presented in Fig. 2. PM<sub>10</sub> levels fluctuated over the years whereby its level decreased by 9.5% from 2006 to 2011, but increased by 21.8% in 2015. The changes in the levels of ambient air pollutants (NO<sub>2</sub> and SO<sub>2</sub>) showed similar trends over the last 9 years, whereby a slight decrease was shown from 2006 to 2014, followed by an increase in 2015. The NO<sub>x</sub> levels decreased between 2006 and 2015 from 39.3 to 32.56 µg/m<sup>3</sup>, while the O<sub>3</sub> levels increased annually from 2006 to 2015. In

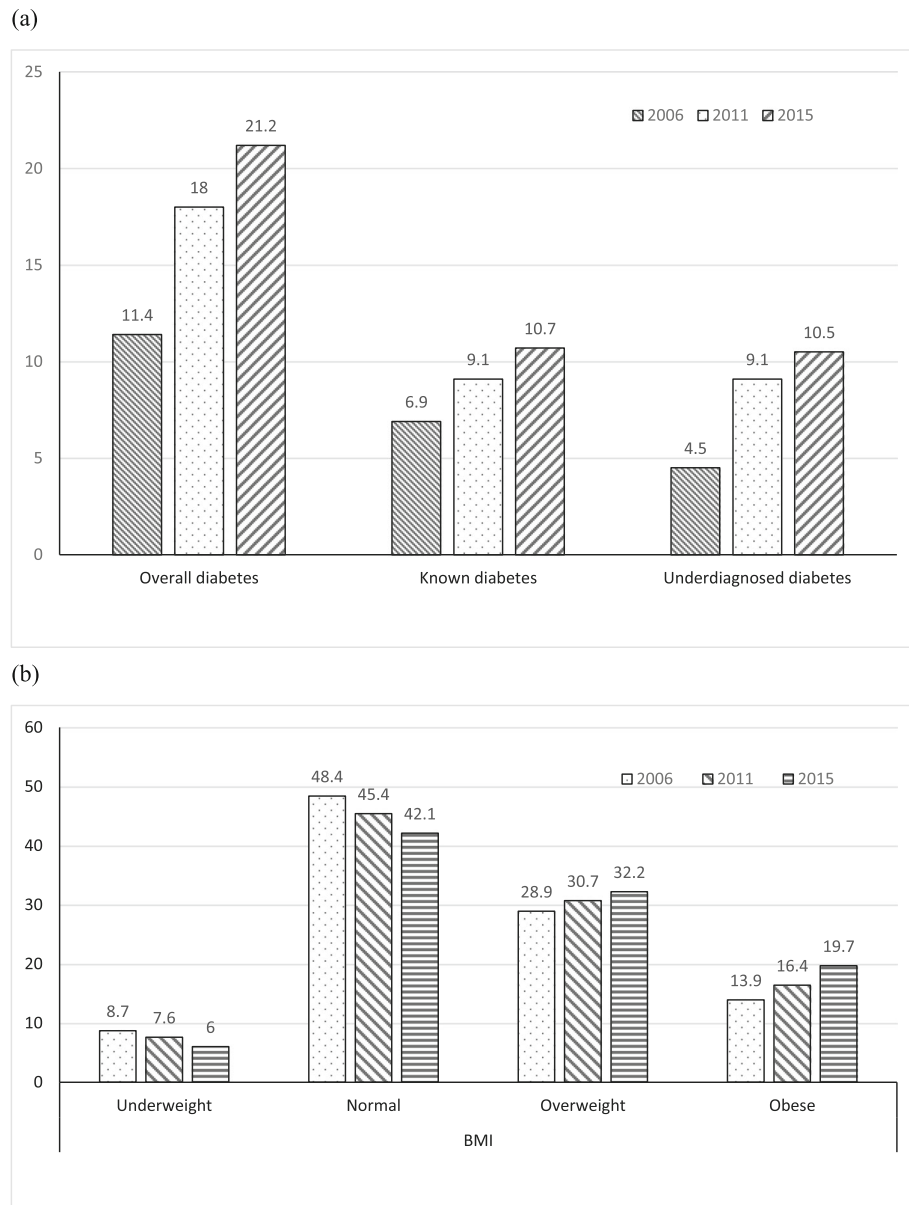
**Table 1** Characteristics of the respondents included in this study

Characteristics	NHMS 2006(N = 56,710)	NHMS 2011(N = 28,498)	NHMS 2015(N = 29,460)
<b>Strata</b>			
Urban	32,734 (57.7%)	16,372 (57.4%)	16,880 (57.3%)
Rural	23,976 (42.3%)	12,126 (42.6%)	12,580 (42.7%)
<b><sup>a</sup>Age Group</b>			
0–7	9988 (17.6%)	4426 (15.5%)	4303 (14.6%)
8–17	12,143 (21.4%)	5841 (20.5%)	5198 (17.6%)
18–24	5587 (9.9%)	2893 (10.2%)	2733 (9.3%)
25–34	7333 (12.9%)	3986 (14.0%)	4272 (14.5%)
35–44	7530 (13.3%)	3643 (12.8%)	3712 (12.6%)
45–54	6618 (11.7%)	3482 (12.2%)	3766 (12.8%)
55–64	4197 (7.4%)	2460 (8.6%)	3027 (10.3%)
65+	3274 (5.8%)	1767 (6.2%)	2449 (8.3%)
<b>Gender</b>			
Male	26,709 (47.1%)	13,757 (48.3%)	14,225 (48.3%)
Female	30,001 (52.9%)	14,741 (51.7%)	15,235 (51.7%)
<b>Ethnicity</b>			
Malays	32,493 (57.3%)	16,975 (59.6%)	18,845 (64.0%)
Chinese	10,251 (18.1%)	4944 (17.3%)	4284 (14.5%)
Indian	4415 (7.8%)	2122 (7.4%)	1993 (6.8%)
Indigenous population of Malaysia	7093 (12.5%)	2933 (10.3%)	2737 (9.3%)
Others	2458 (4.3%)	1524 (5.3%)	1601 (5.4%)
<b><sup>b</sup>Physical Activities</b>			
Active	19,246 (56.7%)	12,196 (63.7%)	13,872 (67.1%)
Inactive	14,690 (43.3%)	6949 (36.3%)	6804 (32.9%)

NHMS: National Health Morbidity Survey Estimates are weighted to be representative of Malaysian population

<sup>a</sup>indicates missing data of 40 for year 2006

<sup>b</sup>indicates missing data of 22,774, 10,718 and 8784 for year 2006, 2011 and 2015 respectively



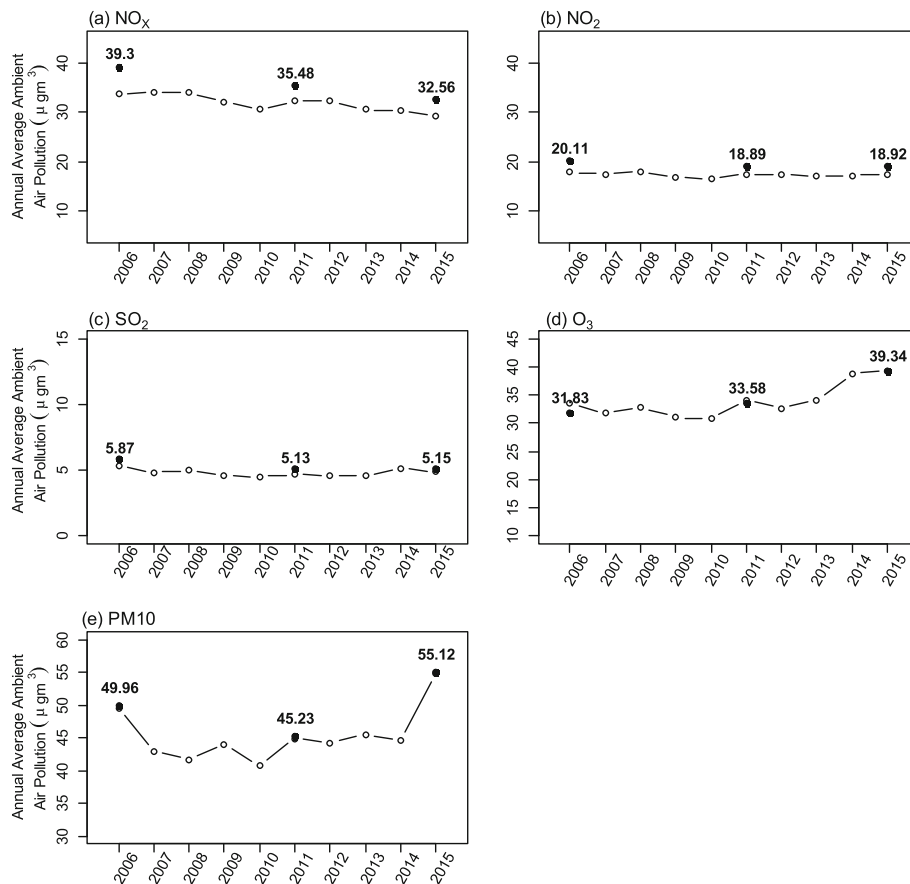
**Fig. 1** Prevalence of (a) overall diabetes, known diabetes and underdiagnosed diabetes, and (b) underweight, normal, overweight and obese by NHMS survey years

general, the individual exposure levels to these pollutants (NO<sub>x</sub>, NO<sub>2</sub>, SO<sub>2</sub>, O<sub>3</sub> and PM<sub>10</sub>) were higher than the annual averages of the five pollutants present in the ambient air.

The adjusted ORs for the annual average levels of all five air pollution exposures over the periods from 2006 to 2015 are presented in Fig. 3. For the overall diabetes, interesting patterns were observed. The adjusted ORs per IQR increment levels (µg/m<sup>3</sup>) of the annual average levels of all five air pollutants increased from NHMS 2006 to 2011, followed by a decreasing trend from NHMS 2011 to 2015 (Fig. 3a). A significant positive

interaction effect was observed between exposure to O<sub>3</sub> and NHMS 2006 (OR = 1.187, 95% CI, 1.088, 1.294). Positive interaction terms between the NHMS 2011 and the four annual average levels of air pollution exposures were statistically significant (*p* < 0.05) (except for SO<sub>2</sub>). However, none of the interaction terms for the NHMS 2015 and the annual average levels of all three air pollutants (PM<sub>10</sub>, O<sub>3</sub> and SO<sub>2</sub>) showed statistical significance at 0.05 level, except for NO<sub>2</sub> and NO<sub>x</sub>.

Different results were observed for the known diabetes (Fig. 3b), whereby the adjusted ORs decreased over the NHMS surveys in 2006, 2011 to 2015 except for O<sub>3</sub> in



**Fig. 2** Annual average levels of **a** NO<sub>x</sub>, **b** NO<sub>2</sub>, **c** SO<sub>2</sub>, **d** O<sub>3</sub> and **e** PM<sub>10</sub> in ambient air of Malaysia from 2006 to 2015. Note: solid black circles denote individual exposure levels to these pollutants (NO<sub>x</sub>, NO<sub>2</sub>, SO<sub>2</sub>, O<sub>3</sub> and PM<sub>10</sub>) during the survey years while transparent circles denote annual averages of the five pollutants present in the ambient air

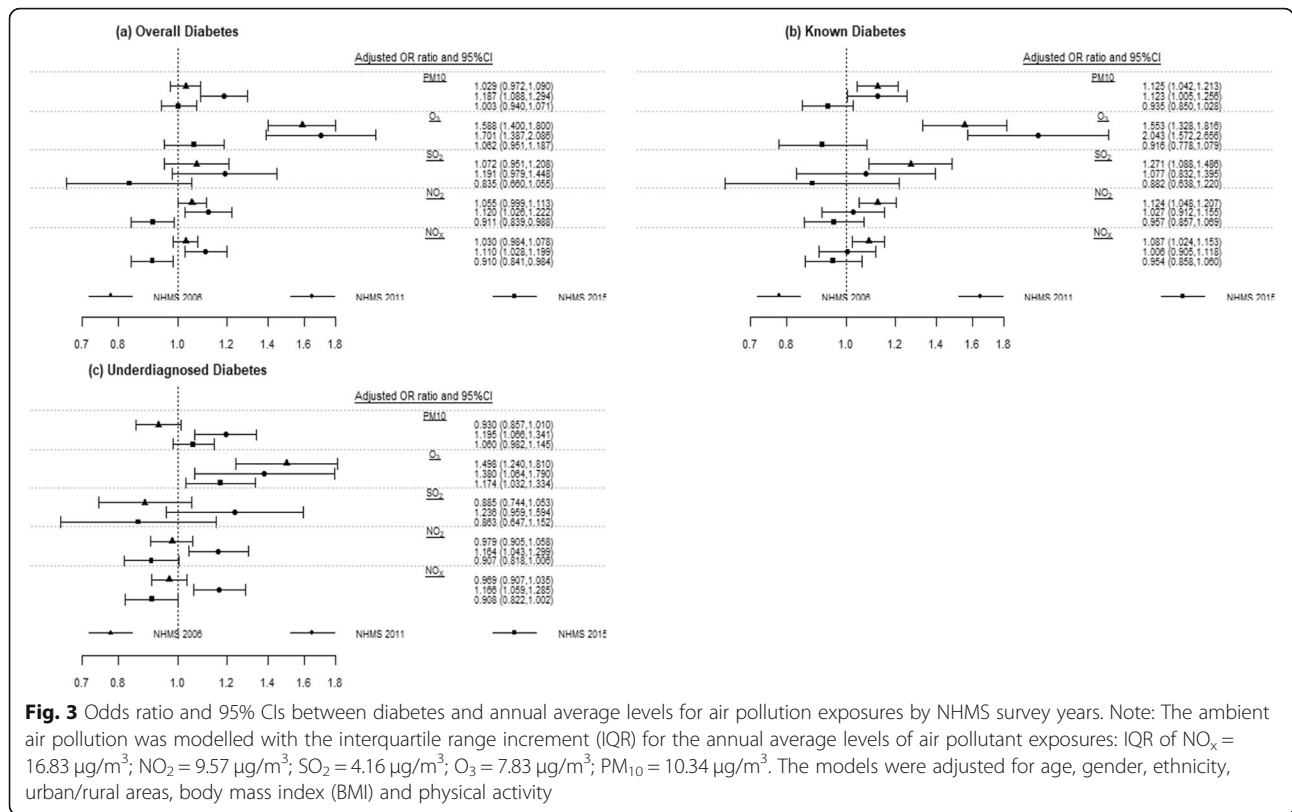
NHMS 2011. Statistically significant interaction terms were observed for all the five annual average air pollution exposure levels in 2006, while those for O<sub>3</sub> and PM<sub>10</sub> were found only in NHMS 2011. No statistical significance was observed between the interaction terms of the annual average levels of all the five air pollutants in NHMS 2015.

The adjusted ORs per IQR increment levels of each air pollutant for underdiagnosed diabetes showed similar patterns as overall diabetes, increasing from NHMS 2006 to NHMS 2011 (except for O<sub>3</sub>), followed by a decrease from NHMS 2011 to NHMS 2015 (Fig. 3c). However, statistically significant ( $p < 0.05$ ) interaction terms between NHMS 2011 and the annual average levels for all the five air pollutant levels for overall diabetes were different from those for underdiagnosed diabetes. The positive interaction terms with the three NHMS and annual average levels for O<sub>3</sub> exposure were statistically different ( $p < 0.05$ ). Significant positive associations of underdiagnosed diabetes with PM<sub>10</sub>, O<sub>3</sub>, NO<sub>2</sub> and NO<sub>x</sub> were also found in the NHMS 2011.

## Discussion

This is the first study, to the best of our knowledge that investigated the long-term association between ambient air pollution exposure and the prevalence of diabetes in Malaysia over a duration of 9 years (2006–2015).

The WHO air quality guidelines recommended that particulate matters should be below 10 and 20 µg/m<sup>3</sup> (or 25 and 50 µg/m<sup>3</sup> 24-h mean) for PM<sub>2.5</sub> and PM<sub>10</sub> respectively. Particulate matters include both organic and inorganic suspended solid and liquid particles. Sulphates, nitrates, ammonia, sodium chloride, black carbon and mineral dust are the components found to be associated with short- and long-term health impacts. The present study showed that exposure to PM<sub>10</sub> in Malaysia was significantly associated with higher prevalence of known diabetes for years 2006 and 2011. However, this association was not seen in 2015 despite the highest PM<sub>10</sub> recorded during that year. This could be due to the presence of bias or delay effect during the exposure assessment, outcome assessment and confounder assessment as specified by O'Donovan et al. [28]. In order to



reduce exposure bias, standard prevailing estimates of outdoor particulate matters and nitrogen oxide concentration were confined to an area within 1 × 1 km of the volunteer’s house postcode in that particular study. Unfortunately, the exposure of individual volunteers in the present study was based on the concentrations of these pollutants recorded by the most adjacent monitoring station of different coverage sizes. Exposure to air pollution was based on residential location and may not reflect actual exposure. One option to tackle this would be to only include individuals that live close to a monitoring station (e.g. within 10, 50 or 100 km) in a sensitivity analysis. A sensitivity analysis to exclude those who are living outside 50 km radius from the air monitoring station was performed (supplementary Fig. 2) and only slight differences were noticed (OR of SO<sub>2</sub> for overall diabetes of NHMS 2015, OR of PM<sub>10</sub> for known diabetes of NHMS 2011, and ORs of O<sub>3</sub>, NO<sub>2</sub> and NO<sub>x</sub> for underdiagnosed diabetes of NHMS 2015). Hence, exposure measurement error may contribute little impact to the observed association in this study. Other unknown factors may have contributed to the observed association. Another limitation of the study is that the onset of diabetes for each subject was not available for more accurate analysis. In addition, the duration of diabetes, what diabetes medication prescription, whether those

with diabetes are compliance to medication and lifestyle changes and etc. are not captured in the present study.

The fasting capillary blood glucose of each volunteer in the present study was measured with a portable whole blood test system and categorised as having diabetes when the concentration is ≥6.1 mmol/L or non-fasting glucose of ≥11.0 mmol/L [25]. This approach is different from that used by O’Donovan et al. [28], which included volunteers with fasting glucose ≥7.0 mmol/L or two-hour glucose ≥11.0 mmol/L using oral glucose tolerance test. There were other limitations in the present study due to confounders such as smoking, area social deprivation, noise pollution, indoor air pollution, and neighbourhood green space, which have not been adjusted accordingly in the analysis, compared to the previous study by O’Donovan et al. [28].

The association of particulate matters with the development of diabetes is mixed ranging from strong, weak to no association [13, 29–34]. Many groups investigated the exposure to PM<sub>2.5</sub> or combination of PM<sub>2.5</sub> and PM<sub>10</sub> instead of PM<sub>10</sub> alone, as analysed in the present study. The travel distance of coarse PM<sub>10</sub> ranges from 1 to 10 km while fine PM<sub>2.5</sub> ranges from 100 to 1000 km from the source of origin. The fine particles can be suspended for a longer period in the air (days to weeks) than the coarse particles in hours [35]. The size of the

particles will affect their penetration capacity into the lungs. While the coarse particles can be easily eliminated by muco-ciliary expulsion, sneezing and coughing, the fine particles can easily enter bronchioles and alveoli, and can even penetrate the lungs and enter the blood stream directly. Hence, measurement of  $PM_{10}$  concentration and exposure which may include ultrafine, fine and coarse particles in the present study will limit the determination of causal effect of these particles and disease occurrence.

In the present study, a  $10.34 \mu\text{g}/\text{m}^3$  increase of  $PM_{10}$  in NHMS 2011 led to 19% significant increase in overall diabetes in Malaysia while not for NHMS 2006 and 2015 (3 and 0.3% respectively). Several studies have reported the association between  $PM_{2.5}$ , instead of  $PM_{10}$  and the prevalence of diabetes. For instance, an increase of 19% in NHMS 2011 was relatively higher than that reported by Pearson et al. [36] at 1% increase in diabetes prevalence with a  $10 \mu\text{g}/\text{m}^3$  increase of  $PM_{2.5}$  in the United States. Similarly, in Canada,  $10 \mu\text{g}/\text{m}^3$  increases in  $PM_{2.5}$  were associated with an increase in diabetes mortality (hazard ratio: 1.49; 95% CI: 1.37–1.62) [30]. Another study in Ontario Canada reported hazard ratio of 1.08 for diabetes for every  $10 \mu\text{g}/\text{m}^3$  increase of  $PM_{2.5}$  after gender, age, survey year and region adjustment [31]. Increase in  $PM_{2.5}$  has also been shown to be associated with increased diabetes prevalence in China [37]. There was at least one study conducted in the United States that included PM of various sizes in relation to diabetes incidence [32]. The study showed that there was no strong evidence of association between exposure to  $PM_{2.5}$ ,  $PM_{10}$  and  $PM_{2.5-10}$  in the previous 12 months and the incident of type 2 diabetes among women of two prospective cohorts of the Nurses' Health Study (NHS) and the Health Professionals Follow-Up Study (HPFS) [32].

The mechanistic explanation for the increase of diabetes prevalence due to PM, as found in the present study, could be due to their effects on the inflammatory reactions. For instance, PM were reported to have inverse association with DNA methylation of the inflammatory genes (e.g. CD14 and Toll-like receptor 4) in peripheral blood of healthy overweight/obese subjects [38]. CD14 is an inflammatory cytokine produced by monocytes/macrophages and serves an innate immune receptor against lipopolysaccharide of microorganism. CD14 together with its downstream signalling Toll-like receptor (TLR) 4 will lead to the activation of the nuclear factor  $\kappa\text{B}$  inflammatory cascade which eventually stimulates the production of pro-inflammatory cytokines like tumour necrosis factor (TNF). Hence, subsequent to long term exposure to particulate matters might trigger excessive inflammatory responses. Similarly,  $PM_{2.5}$  was reported to be associated with higher fasting blood

glucose among non-diabetic individuals.  $PM_{2.5}$  reduced the blood intercellular adhesion molecule-1 (ICAM-1) methylation which eventually up-regulates the expression of ICAM-1 (an inflammatory cytokine) on leukocytes [39]. In addition, a  $10 \mu\text{g}/\text{m}^3$  increase of both the fine and coarse particulate matters was significantly associated with 18% increase fractional exhaled nitric oxide (FeNO, a non-invasive biomarker of airway inflammation; 95% CI: 0.18, 2.20) among diabetes patients [40] and decreased endothelial function among individuals who are free of clinical cardiovascular disease [41].

Ambient ozone in the present study was significantly associated with 59–70% increase of overall diabetes in 2006 and 2011. Individual exposure to  $O_3$  level increased throughout the survey years. On average, the odds of diabetes increased approximately 50% per IQR increment of  $O_3$ . It is noteworthy that the concentration of  $O_3$  in the ambient air of Malaysia increased throughout the survey years. Ozone is a hazardous photochemical pollutant formed after reaction of the volatile organic compounds with  $\text{NO}_x$  ( $\text{NO}$ ,  $\text{NO}_2$ ) emitted by industries and automobile exhausts in the presence of UV rays. The trapped ozone in the urban areas was associated with 18% increase of diabetes incidence (95% CI: 1.04, 1.34) of African American women [42]. Ozone induced whole-body insulin resistance and oxidative stress, endoplasmic reticulum stress, c-Jun N-terminal kinase (JNK) activation and impaired insulin signalling in skeletal muscle of the Wistar rat model [43]. Renzi et al. [44] reported an association between  $O_3$  and diabetes incidence [hazard ratio of 1.015 (1.002–1.027) per  $10 \mu\text{g}/\text{m}^3$  increases] among 1,425,580 subjects aged 35 and above in Rome Italy, and this association was stronger in women than men and those aged < 50 years. Bass et al. [45] suggested that  $O_3$  could induce adverse systemic metabolic impairments (increased  $\alpha 2$ -macroglobulin, adiponectin, osteopontin, leptin, endoplasmic reticulum stress and decreased phosphorylation of insulin receptor substrate-1 in liver and adipose tissues) of brown Norway rats via sympathetic nervous system stimulation. This study provided a new epidemiological evidence to support the above mentioned animal studies on the possible adverse effect of long term  $O_3$  in causing diabetes.

Results showed that there were significant positive associations between nitrogen oxides ( $\text{NO}_2$ ) and  $\text{NO}_x$  exposures and the prevalence of overall diabetes for 2011 while significant negative interaction term between  $\text{NO}_2$  /  $\text{NO}_x$  and overall diabetes for 2015. No significant association was observed for 2006. The exact mechanism that contribute to these mixed findings in the present study is unknown. The best approach to address this discrepancy could be to conduct a prospective study in which each participant carry a portable air pollutant monitor daily over the study duration for direct



exposure measurement and correlation with the onset of disease. Other confounding factors such as exposure to second-hand smoke, genetic differences, socioeconomic status, diet, lifestyle, age, physical activities etc. can be captured and recorded accurately for adjustment during the data analysis. The adjusted ORs of NO<sub>2</sub> and NO<sub>x</sub> for 2011 in the present study were 1.12 and 1.11 respectively. Similar ORs of the pollutants and prevalence of diabetes (1.011 and 1.015) were reported by Renzi et al. [44]. NO<sub>2</sub> is one of the major components of traffic-related air pollution. Balti et al. [46] reported significant association of NO<sub>2</sub> and diabetes (13% higher risk). The risk of insulin resistance for children who are exposed to traffic-related air pollution increased by 17.0 and 18.7% for every 2 standard deviations increase in ambient NO<sub>2</sub> and particulate matter ≤10 μm in diameter respectively [47]. Similarly, Brook et al. [48] reported an association of NO<sub>2</sub> exposure with higher diabetes risk in women (odds ratio of 1.04) but not in men at Hamilton and Toronto. Dijkema et al. [49] observed significant increased odds ratios of 1.48 and 1.44 for NO<sub>2</sub> and when living within 250 m of a main road respectively for diabetes in Netherlands. Eze et al. [50] reviewed that both PM<sub>2.5</sub> (OR = 1.10) and NO<sub>2</sub> (OR = 1.08) increased the risk of developing diabetes mellitus by 8–10% per 10 μg/m<sup>3</sup> exposure respectively.

The sample size for NHMS 2006 was larger compared with NHMS 2011 and NHMS 2015. Logistic regression model is used to calculate the odds ratio and adjust for confounders in the present study. Odds ratio determined for NHMS 2006 will converge to a better representation of normally distributed measures of association between an air pollution exposure and an outcome (diabetes prevalence) as the sample size increases. Larger sample size is generally required for studies with very common or extremely rare outcome, studies with higher number of exposure variables and characteristics, and studies with discrete exposures compared with continuous exposures [51]. As when the sample size increases, the confidence interval narrows substantially with better or more precise estimation of effects and less random errors.

Subsequent to modernisation and urbanisation, lifestyle changes from active to inactive sedentary lifestyle is likely to contribute to the growing burden of non-communicable diseases in developed and developing countries worldwide. There is a need to have a sensitive, reliable and validated assessment or surveillance tool for the capturing of different types, durations, intensities, levels and diversities of physical activities under different settings and living conditions at different countries. It is challenging to accurately measure habitual physical activity using currently available assessment tools that are developed and validated largely using Western

populations with different cultural believes and practices compared with Asian populations. Currently, two questionnaires have been developed and validated as an international effort to provide comparable and standardise self-report measure of physical activity across countries i.e. Global Physical Activity Questionnaire (GPAQ) and International Physical Activity Questionnaire (IPAQ). GPAQ was developed by WHO for physical activity surveillance via face-to-face interviews conducted by trained interviewers in three settings (or domains i.e. activity at work, travel to and from places, recreational activities) and sedentary behaviour within a typical week (WHO) [52]. On the other hand, IPAQ captures overall physical activity according to intensity (high, moderate, low) as metabolic equivalent task (MET) minutes per week and is not domain specific via self-reporting within the last 7 days. In the present study, GPAQ was used to collect the physical activity for the year 2006 while IPAQ was used for 2011 and 2015. Caution shall be exercised in the interpretation, owing to change of physical activity assessment tool from GPAQ to the IPAQ, as this may impact on the accuracy and precision of the collected data. Different measurement tools use slightly different approaches in collecting the data. Both of these methods are very subjective where they are based on perception-based awareness recall and may not reflect the real practice in life. These methods may have over-reporting issue and recall bias compared with those objective approaches that measure the intensity, amount, duration and frequency of actual physical activities practice in life, and follows by the recording of all measurement via observation by a trained observer using questionnaire checklist. GPAQ combines both work and household activities together during assessment and analysis while IPAQ has separate domains for both activities. GPAQ focuses on physical activities in a typical week while IPAQ focuses on activities of the last 7 days. GPAQ classifies walking under moderate intensity activity while IPAQ assesses walking separately based on MET minutes. Au et al. [53] reported GPAQ may underestimated the total physical activities by not seeking domestic household activities separately from work-related activities. GPAQ was reported to have better reliability for people with stable work patterns than those with more variable physical activity.

Several limitations of this study are recognised and hence its findings should be interpreted with caution. First, this study could not completely exclude exposure measurement errors because the spatial resolution of the five ambient air pollution data was not very high, at the state-level, due to the lack of individual information on the time-location activity patterns. Hence, participants residing in different regions of the same state were assigned to the same level of air pollution exposure.

Second, key potential confounding factors, such as dietary intake, have not been adjusted in the present models due to unavailability of such information. Therefore, it is not possible to infer causation but association between the long-term air pollution exposure and diabetes. Third, this study only investigated the association between diabetes prevalence and air pollutants with a rather limited population size and risk factors compared with other more pertinent endpoints in other longitudinal studies (diabetes incidence) or biomarkers (cross-sectional studies). Forth, in the present study, annual exposure estimates to air pollutants over the survey periods of 9 years was hypothesised to be representative for lifelong exposure based on the assumptions that no movement of the individual to another location within the study duration, no change of occupation which may confound the exposure to these air pollutants, no change of infrastructures such as additional housing areas, road transport and deforestation etc. This is one of the limitation of the present study and can be further improved if the study could correlate the onset of diabetes of each participant to the air pollution exposure on that particular year of disease onset with the adjustment of all the changes mentioned. Changes to any of those factors mentioned earlier may lead to exposure misclassification and can be further addressed using sensitivity test.

## Conclusion

The annual air pollution data showed an increase in the concentration of O<sub>3</sub> throughout the investigated years from 2006 to 2015 for underdiagnosed diabetes. This unique analysis of the nation-wide series of NHMS survey data suggested that the exposure to O<sub>3</sub>, NO<sub>2</sub>, NO<sub>x</sub> and PM<sub>10</sub> may have mixed effect estimates towards the risk of DM and their roles are yet to be investigated further with direct measurement of pollutant exposure and adjusted with most if not all confounding factors with other interaction models. Despite of this, in the interest of public health in relation to the escalating increase in non-communicable diseases in Malaysia, there is an urgent need to reduce the concentrations of air pollutants, particularly O<sub>3</sub>, PM<sub>10</sub>, NO<sub>2</sub> and NO<sub>x</sub>.

## Supplementary information

**Supplementary information** accompanies this paper at <https://doi.org/10.1186/s12940-020-00579-w>.

**Additional file 1.**

## Abbreviations

BMI: Body mass index; CAQM: Continuous Air Quality Monitoring; CI: Confidence intervals; DM: Diabetes mellitus; DOE: Department of Environment; EBs: Enumeration Blocks; GPAQ: Global Physical Activity Questionnaire; IDF: International Diabetes Federation; IPAQ: International Physical Activity Questionnaire; IQR: Interquartile range; LQs: Living Quarters; MET: Metabolic Equivalent of Task; NHMS: National Health and Morbidity

Survey; NO<sub>2</sub>: Nitrogen dioxide; NO<sub>x</sub>: Nitrogen oxide; O<sub>3</sub>: Ozone; OR: Odds ratios; PM: Particular matters; SO<sub>2</sub>: Sulphur dioxide; T2DM: Diabetes mellitus type 2; WHO: World Health Organisation

## Acknowledgements

We would like to thank the Director General of Health Malaysia for his permission to publish this article.

## Authors' contributions

Conceptualisation: W.S.F., Y.P.S., M.J.W., K.G.L., S.A., C.W.L., M.F.M.Y. and H.T.A.; Data curation: Y.P.S., M.S.M., N.I.W., N.L.A.M., H.A.A.H., W.S.R.H., E.A.R. and Z.M.R.; Formal analysis: W.S.F., Y.P.S. and E.C.W.L.; Funding acquisition: W.S.F., Y.P.S., M.J.W. and S.A.; Investigation: W.S.F. and Y.P.S.; Methodology: W.S.F., Y.P.S., M.J.W., E.C.W.L., M.S.M., N.I.W., N.L.A.M., H.A.A.H., W.S.R.H., E.A.R. and Z.M.R.; Project administration: W.S.F., Y.P.S. and H.T.A.; Resources: Y.P.S., M.J.W., K.G.L., M.S.M., N.I.W., N.L.A.M., H.A.A.H., W.S.R.H., M.F.M.Y., H.T.A., E.A.R. and Z.M.R.; Software: Y.P.S. and E.C.W.L.; Supervision: M.J.W., K.G.L., S.A., M.F.M.Y. and H.T.A.; Validation: Y.P.S.; Writing – original draft: W.S.F. and Y.P.S.; Writing – review & editing: W.S.F., M.J.W., E.C.W.L., K.G.L., S.A., C.W.L., M.F.M.Y. and H.T.A. All authors agreed to the final manuscript.

## Funding

This work was supported by an internal grant from the International Medical University (IMU 346/2016).

## Availability of data and materials

The datasets used in this study are available from the corresponding author upon reasonable request.

## Ethics approval and consent to participate

Appropriate consent has been obtained as stated in the methodology section of this article.

## Consent for publication

All authors approved the manuscript and this submission.

## Competing interests

The authors declare that they have no competing interests.

## Author details

<sup>1</sup>Institute for Research, Development and Innovation (IRDI), International Medical University, 57000 Kuala Lumpur, Malaysia. <sup>2</sup>School of Medicine, International Medical University, 57000 Kuala Lumpur, Malaysia. <sup>3</sup>School of Postgraduate Studies, International Medical University, 57000 Kuala Lumpur, Malaysia. <sup>4</sup>Institute for Public Health, Ministry of Health, 40170 Shah Alam, Selangor, Malaysia. <sup>5</sup>Department of Environment, Ministry of Energy, Technology, Science, Environment and Climate Change, 62662 Putrajaya, Malaysia.

Received: 24 July 2019 Accepted: 18 February 2020

## References

- International Diabetes Federation (IDF). 2017. <https://diabetesatlas.org/resources/2017-atlas.html>.
- Institute for Public Health, Ministry of Health. National Health Morbidity Survey 1986–1987. Diabetes Mellitus, vol. 4. Malaysia: Institute for Public Health, Ministry of Health, Kuala Lumpur; 2000.
- Institute for Public Health, Ministry of Health. National Health Morbidity Survey, 2015a. Non-communicable diseases, risk factors & other health problems, vol. 2. Malaysia: Institute for Public Health, Ministry of Health, Kuala Lumpur; 2015. <http://www.iku.gov.my/images/IKU/Document/REPORT/nhmsreport2015vol2.pdf>.
- Lim KG. A review of adult obesity research in Malaysia. *Med J Malaysia*. 2016;71(1):1–19.
- Nolan CJ, Damm P, Prentki M. Type 2 diabetes across generations: from pathophysiology to prevention and management. *Lancet*. 2011;378:169–81. [https://doi.org/10.1016/S0140-6736\(11\)60614-4](https://doi.org/10.1016/S0140-6736(11)60614-4).
- Agardh E, Allebeck P, Hallqvist J, Moradi T, Sidorchuk A. Type 2 diabetes incidence and socio-economic position: a systematic review and meta-analysis. *Int J Epidemiol*. 2011;40:804–18. <https://doi.org/10.1093/ije/dyr029>.

7. Dendup T, Feng X, Clingan S, Astell-Burt T. Environmental risk factors for developing type 2 diabetes mellitus: a systematic review. *Int J Environ Res Public Health*. 2018;15(1):78. <https://doi.org/10.3390/ijerph15010078>.
8. Mezuk B, Li X, Cederin K, Rice K, Sundquist J, Sundquist K. Beyond access: characteristics of the food environment and risk of diabetes. *Am J Epidemiol*. 2016;183:1129–37. <https://doi.org/10.1093/aje/kwv318>.
9. Alderete TL, Habre R, Toledo-Corral CM, Berhane K, Chen Z, Lurmann FW, Weigensberg MJ, Goran MI, Gilliland FD. Longitudinal associations between ambient air pollution with insulin sensitivity,  $\beta$ -cell function, and adiposity in Los Angeles Latino children. *Diabetes*. 2017;66(7):1789–96. <https://doi.org/10.2337/db16-1416>.
10. Alderete TL, Chen Z, Toledo-Corral CM, Contreras ZA, Kim JS, Habre R, Chatzi L, Bastain T, Breton CV, Gilliland FD. Ambient and traffic-related air pollution exposures as novel risk factors for metabolic dysfunction and type 2 diabetes. *Curr Epidemiol Rep*. 2018;5(2):79–91. <https://doi.org/10.1007/s40471-018-0140-5>.
11. Eze IC, Schaffner E, Fischer E, Schikowski T, Adam M, Imboden M, Tsai M, Carballo D, von Eckardstein A, Kunzli N, Schindler C, Probst-Hensch N. Long-term air pollution exposure and diabetes in a population-based Swiss cohort. *Environ Int*. 2014;70:95–105. <https://doi.org/10.1016/j.envint.2014.05.014>.
12. Eze IC, Imboden M, Kumar A, von Eckardstein A, Stolz D, Gerbase MW, Kunzli N, Pons M, Kronenberg F, Schindler C, Probst-Hensch N. Air pollution and diabetes association: modification by type 2 diabetes genetic risk score. *Environ Int*. 2016;94:263–71. <https://doi.org/10.1016/j.envint.2016.04.032>.
13. Kramer U, Herder C, Sugiri D, Strassburger K, Schikowski T, Ranft U, Rathmann W. Traffic-related air pollution and incident type 2 diabetes: results from the SALIA cohort study. *Environ Health Perspect*. 2010;118(9):273–9. <https://doi.org/10.1289/ehp.0901689>.
14. Peters A. Air pollution and mortality from diabetes mellitus. *Nat Rev Endocrinol*. 2012;8:706–7. <https://doi.org/10.1038/nrendo.2012.204>.
15. Afroz R, Hassan MN, Ibrahim NA. Review of air pollution and health impacts in Malaysia. *Environ Res*. 2003;92:71–7. [https://doi.org/10.1016/S0013-9351\(02\)00059-2](https://doi.org/10.1016/S0013-9351(02)00059-2).
16. Mahiyuddin WR, Sahani M, Aripin R, Latif MT, Thach TQ, Wong CM. Short-term effects of daily air pollution on mortality. *Atmos Environ*. 2013;65:69–79. <https://doi.org/10.1016/j.atmosenv.2012.10.019>.
17. Brauer M, Jamal HH. Fires in Indonesia: crisis and reaction. *Environ Sci Technol*. 1998;32(17):404A–7A. <https://doi.org/10.1021/es983677j>.
18. Othman J, Sahani M, Mahmud M, Ahmad MK. Transboundary smoke haze pollution in Malaysia: inpatient health impacts and economic valuation. *Environ Pollut*. 2014;189:194–201. <https://doi.org/10.1016/j.envpol.2014.03.010>.
19. Awang MB, Jaafar AB, Abdullah AM, Ismail MB, Hassan MN, Abdullah R, Johan S, Noor H. Air quality in Malaysia: Impacts, management issues and future challenges. *Respirology*. 2000;5:183–96. <https://doi.org/10.1046/j.14401843.2000.00248.x>.
20. Faiz A, Weaver CS, Walsh MP. Air pollution from motor vehicles: Standards and technologies for controlling emissions: The World Bank Washington, D. C.; 1996. <https://doi.org/10.1596/0-8213-3444-1>.
21. Institute for Public Health, Ministry of Health. National Health Morbidity Survey, 2006. Institute for Public Health, Ministry of Health, Kuala Lumpur, Malaysia. [http://www.iku.gov.my/index.php/research-eng/list-of-research-eng/iku-eng/nhms-eng/nhm\\_s-2006-eng](http://www.iku.gov.my/index.php/research-eng/list-of-research-eng/iku-eng/nhms-eng/nhm_s-2006-eng).
22. Institute for Public Health, Ministry of Health. National Health Morbidity Survey, 2011. Methodology and General Findings. Vol. 1 Malaysia: Institute for Public Health, Ministry of Health, Kuala Lumpur, Malaysia. <http://www.iku.gov.my/images/IKU/Document/REPORT/NHMS2011-Volumel.pdf>.
23. Institute for Public Health, Ministry of Health. National Health Morbidity Survey, 2015. Methodology and General Findings. Vol. 1 Malaysia: Institute for Public Health, Ministry of Health, Kuala Lumpur, Malaysia. <http://www.iku.gov.my/images/IKU/Document/REPORT/nhmsreport2015vol1.pdf>.
24. Fuziah MZ, Hong JYH, Wu LL, Fatimah H, Rahmah R, Muhammad Yazid J, Jamaiyah H, Jaya Purany SP, Mohamad Adam B, Permaa S. 2nd Report of Diabetes in Children and Adolescents Registry (DiCARE) 2006–2008. Kuala Lumpur: Ministry of Health; 2012. [https://www.crc.gov.my/wpcontent/uploads/2014/08/Annual\\_Report\\_of\\_The\\_Diabetes\\_In\\_Children\\_And\\_Adolescents\\_Registry\\_2006\\_2008.pdf](https://www.crc.gov.my/wpcontent/uploads/2014/08/Annual_Report_of_The_Diabetes_In_Children_And_Adolescents_Registry_2006_2008.pdf).
25. World Health Organisation, WHO/NCD/NCS/99.2. Definition, diagnosis and classification of diabetes mellitus and its complications. Part 1: diagnosis and classification of diabetes mellitus. Report of a WHO Consultation. Geneva: World Health Organisation; 1999. <http://www.who.int/iris/handle/10665/66040>.
26. World Health Organisation. Obesity: Preventing and managing the global epidemic. Report of a WHO Consultation on Obesity. Geneva: World Health Organisation; 2000. [http://whqlibdoc.who.int/trs/WHO\\_TRS\\_894.pdf](http://whqlibdoc.who.int/trs/WHO_TRS_894.pdf).
27. Department of Environment, Ministry of Natural Resources and Environment. Malaysia Environmental Quality Report (EQR), 2013. <https://enviro.doe.gov.my/ekmc/digital-content/87500/>.
28. O'Donovan G, Chudasama Y, Grocock S, Leigh R, Dalton AM, Gray LJ, Yates T, Edwardson C, Hill S, Henson J, Webb D, Khunti K, Davies MJ, Jones AP, Bodicoat DH, Wells A. The association between air pollution and type 2 diabetes in a large cross-sectional study in Leicester: the CHAMPIONS study. *Environ Int*. 2017;104:41–7. <https://doi.org/10.1016/j.envint.2017.03.027>.
29. Strak M, Janssen N, Beelen R, Schmitz O, Vaartjes I, Karssenberg D, van den Brink C, Bots ML, Dijst M, Brunekreef B, Hoek G. Long-term exposure to particulate matter, NO<sub>2</sub> and the oxidative potential of particulates and diabetes prevalence in a large national health survey. *Environ Int*. 2017;108:228–36. <https://doi.org/10.1016/j.envint.2017.08.017>.
30. Brook RD, Cakmak S, Turner MC, Brook JR, Crouse DL, Peters PA, van Donkelaar A, Villeneuve PJ, Brion O, Jerrett M, Martin RV, Rajagopalan S, Goldberg MS, Pope CA, Burnett RT. Long-term fine particulate matter exposure and mortality from diabetes in Canada. *Diabetes Care*. 2013;36(10):3313–20. <https://doi.org/10.2337/dc12.1289>.
31. Chen H, Burnett RT, Kwong JC, Villeneuve PJ, Goldberg MS, Brook RD, van Donkelaar A, Jerrett M, Martin RV, Brook JR, Copes R. Risk of incident diabetes in relation to long-term exposure to fine particulate matter in Ontario, Canada. *Environ Health Perspect*. 2013;121:804–10. <https://doi.org/10.1289/ehp.1205958>.
32. Puett RC, Hart JE, Schwartz J, Hu FB, Liese AD, Laden F. Are particulate matter exposures associated with risk of type 2 diabetes? *Environ Health Perspect*. 2011;119:384–9. <https://doi.org/10.1289/ehp.1002344>.
33. Park SK, Wang W. Ambient air pollution and type 2 diabetes: A systematic review of epidemiologic research. *Curr Environ Health Rep*. 2014;1(3):275–86. <https://doi.org/10.1007/s40572-014-0017-9>.
34. Liang F, Yang X, Liu F, Li J, Xiao Q, Chen J, Liu X, Cao J, Shen C, Yu L, Lu F, Wu X, Zhao L, Wu X, Li Y, Hu D, Huang J, Liu Y, Lu X, Gu D. Long-term exposure to ambient fine particulate matter and incidence of diabetes in China: a cohort study. *Environ Int*. 2019;126:568–75. <https://doi.org/10.1016/j.envint.2019.02.069>.
35. Kim KH, Kabir E, Kabir S. A review on the human health impact of airborne particulate matter. *Environ Int*. 2015;74:136–43. <https://doi.org/10.1016/j.envint.2014.10.005>.
36. Pearson JF, Bachireddy C, Shyamprasad S, Goldfine AB, Brownstein JS. Association between fine particulate matter and diabetes prevalence in the U. S. *Diabetes Care*. 2010;33:2196–201. <https://doi.org/10.2337/dc10-0698>.
37. Liu C, Yang C, Zhao Y, Ma Z, Bi J, Liu Y, Meng X, Wang Y, Cai J, Chen R, Kan H. Associations between long-term exposure to ambient particulate air pollution and type 2 diabetes prevalence, blood glucose and glycosylated hemoglobin levels in China. *Environ Int*. 2016;92–93:416–21. <https://doi.org/10.1016/j.envint.2016.03.028>.
38. Cantonea L, Iodicea S, Tarantinia L, Albettia B, Restellib I, Vignab L, Bonzini M, Pesatori AC, Bollati V. Particulate matter exposure is associated with inflammatory gene methylation in obese subjects. *Environ Res*. 2017;152:478–84. <https://doi.org/10.1016/j.envres.2016.11.002>.
39. Peng C, Bind MAC, Colicino E, Kloog I, Byun HM, Cantone L, Trevisi L, Zhong J, Brennan K, Dereix AE, Vokonas PS, Coull BA, Schwartz JD, Baccarelli AA. Particulate air pollution and fasting blood glucose in non-diabetic individuals: associations and epigenetic mediation in the normative aging study, 2000–2011. *Environ Health Perspect*. 2016;124:1715–21. <https://doi.org/10.1289/EHP183>.
40. Li H, Bai H, Yang C, Chen R, Wang C, Zhao Z, Kan H. Acute effects of ambient temperature and particulate air pollution on fractional exhaled nitric oxide: a panel study among diabetic patients in Shanghai, China. *J Epidemiol*. 2017;27(12):584–9. <https://doi.org/10.1016/j.je.2017.01.002>.
41. Krishnan RM, Adar SD, Szpiro AA, Jorgensen NW, van Hee VC, Barr RG, O'Neill MS, Herrington DM, Polak JF, Kaufman JD. Vascular responses to long- and short-term exposure to fine particulate matter MESA air (multi-ethnic study of atherosclerosis and air pollution). *J Am Coll Cardiol*. 2012;60:2158–66. <https://doi.org/10.1016/j.jacc.2012.08.973>.
42. Jerrett M, Brook R, White LF, Burnett RT, Yu J, Su J, Seto E, Marshall J, Palmer JR, Rosenberg L, Coogan PF. Ambient ozone and incident diabetes: A prospective analysis in a large cohort of African American women. *Environ Int*. 2017;102:42–7. <https://doi.org/10.1016/j.envint.2016.12.011>.
43. Vella RE, Pillon NJ, Zarrouki B, Croze ML, Koppe L, Guichardant M, Pesenti S, Chauvin MA, Rieusset J, Gélouën A, Soulaige CO. Ozone exposure triggers insulin resistance through muscle c-Jun N-terminal kinase activation. *Diabetes*. 2015;64:1011–24. <https://doi.org/10.2337/db13-1181>.
44. Renzi M, Cerza F, Gariazzo C, Agabiti N, Cascini S, Di Domenicantonio R, Davoli M, Forastiere F, Cesaroni G. Air pollution and occurrence of type 2 diabetes in a large cohort study. *Environ Int*. 2018;112:68–76. <https://doi.org/10.1016/j.envint.2017.12.007>.

45. Bass V, Gordon CJ, Jarema KA, MacPhail RC, Cascio WE, Phillips PM, Ledbetter AD, Schladweiler MC, Andrews D, Miller D, Doerfler DL, Kodavanti UP. Ozone induces glucose intolerance and systemic metabolic effects in young and aged brown Norway rats. *Toxicol Appl Pharmacol*. 2013;273(3): 551–60. <https://doi.org/10.1016/j.taap.2013.09.029>.
46. Balti EV, Echouffo-Tcheugui JB, Yako YY, Kengne AP. Air pollution and risk of type 2 diabetes mellitus: a systematic review and meta-analysis. *Diabetes Res Clin Pract*. 2014;106:161–72. <https://doi.org/10.1016/j.diabres.2014.08.010>.
47. Thiering E, Cyrus J, Kratzsch J, Meisinger C, Hoffmann B, Berdel D, von Berg A, Koletzko S, Bauer CP, Heinrich J. Long-term exposure to traffic-related air pollution and insulin resistance in children: results from the GINIplus and LISAplus birth cohorts. *Diabetologia*. 2013;56:1696–704. <https://doi.org/10.1007/s00125-013-2925-x>.
48. Brook RD, Jerrett M, Brook JR, Bard RL, Finkelstein MM. The relationship between diabetes mellitus and traffic-related air pollution. *J Occup Environ Med*. 2008;50:32–8. <https://doi.org/10.1097/JOM.0b013e31815dba70>.
49. Dijkema MB, Mallant SF, Gehring U, van den Hurk K, Alsema M, van Strien RT, Fischer PH, Nijpels G, Stehouwer CD, Hoek G, Dekker JM, Brunekreef B. Long-term exposure to traffic-related air pollution and type 2 diabetes prevalence in a cross-sectional screening-study in the Netherlands. *Environ Health*. 2011;10:76. <https://doi.org/10.1186/1476-069X-10-76>.
50. Eze IC, Hemkens LG, Bucher HC, Hoffmann B, Schindler C, Künzli N, Schikowski T, Probst-Hensch NM. Association between ambient air pollution and diabetes mellitus in Europe and North America: systematic review and meta-analysis. *Environ Health Perspect*. 2015;123(5):381–9. <https://doi.org/10.1289/ehp.1307823>.
51. Nemes S, Jonasson JM, Genell A, Steineck G. Bias in odds ratios by logistic regression modelling and sample size. *BMC Med Res Methodol*. 2009;9:56. <https://doi.org/10.1186/1471-2288-9-56>.
52. World Health Organisation. Global Physical Activity Questionnaire (GPAQ) analysis guide. Surveillance and population-based prevention of non-communicable diseases Department World Health Organisation, Switzerland. [https://www.who.int/ncds/surveillance/steps/resources/GPAQ\\_Analysis\\_Guide.pdf](https://www.who.int/ncds/surveillance/steps/resources/GPAQ_Analysis_Guide.pdf). Accessed 19 Sept 2019.
53. Au TB, Blizzard L, Schmidt M, Pham LH, Magnussen C, Dwyer T. Reliability and validity of the global physical activity questionnaire in Vietnam. *J Physical Activity Health*. 2010;7:410–8.

## Publisher's Note

Springer Nature remains neutral with regard to jurisdictional claims in published maps and institutional affiliations.

**Ready to submit your research? Choose BMC and benefit from:**

- fast, convenient online submission
- thorough peer review by experienced researchers in your field
- rapid publication on acceptance
- support for research data, including large and complex data types
- gold Open Access which fosters wider collaboration and increased citations
- maximum visibility for your research: over 100M website views per year

**At BMC, research is always in progress.**

Learn more [biomedcentral.com/submissions](https://biomedcentral.com/submissions)

